

BARUNG

LANDCARE NEWS

July - Sept 2011



WORKING FOR OUR FUTURE

Barung Landcare

PO Box 1074
Maleny QLD 4552

Barung Resource Centre

ph 07 5494 3151
fax 07 5494 3141

info@barunglandcare.org.au
Riverside Centre, MALENY

Barung Nurseries

ph 07 5439 9879

nursery@barunglandcare.org.au

Porters Lane, NORTH MALENY

9 George Street, CALOUNDRA

135 Forestry Road, LANDSBOROUGH

www.barunglandcare.org.au

LIFE AFTER DARRYL

PRESIDENT'S REPORT by Eric Anderson

On our return home after two months in Western Australia it was somewhat of a shock to find that our manager, Darryl Ebenezer, had moved on to greener pastures.

Darryl has been appointed general manager of Landcare Queensland and is based in Brisbane. During his tenure of almost six years at Barung he has helped build and maintain our group as one of the biggest Landcare groups by membership in Australia. In our efforts to be self-sufficient in order to fund our community work, he has successfully overseen the establishment of three nurseries and the continuance of our contracting arm for land restoration.

We have been fortunate in being able to employ Darryl for one day a week during July, allowing us time to extract from his head all that information he has used in running this organisation.

On behalf of Barung, I wish Darryl the best in his new venture in Landcare and sincerely thank him for the massive contribution he has happily made to our organisation. I personally will miss him but know that help is but a phone call away.

At this stage we are not rushing to replace Darryl. The Committee will look at its options over the next few months on how we will operate in the future. For the interim, senior staff have been asked to maintain the operations in their areas.

Planning for the future stepped up a notch with the visit on 20th July to our site on the Maleny Community Precinct followed by an information/workshop session to discuss ideas for the planned Education Resource Centre and associated activities.

Many thanks to the twenty keen members who braved the chilly winds and gathered on the proposed Barung site at 4 pm (see below). I introduced the group to the area and after a brief inspection (it was cold) we adjourned to the Veranda Room at the Maleny Community Centre and a welcome cuppa. Here the group engaged in a brainstorming session concentrating on three activity areas – the Education Resource Centre, a retail nursery, and demonstration gardens/plots. The information available from the exercise will help shape the development of a prospectus to attract funds for the development of the site.



A report of the visioning workshop is being prepared. From this we will develop some concept plans for the site and then establish a group to raise funds for the new centre. Contact me (Eric Anderson) at Barung if you are interested in finding out more or wanting to contribute ideas on the development and how to fund it.

The launch of the fundraising will coincide with our planned **21st Birthday Party on Saturday 1st October** at the Maleny Community Centre where the guest speaker for the evening will be Her Excellency the Governor of Queensland. An invitation to the evening is included on page 2 in this *Barung News* and is extended to all members to join in the celebration. Contact the Barung Office soon to register as numbers are finite.

HARDENBERGIA

VIOLACEA

Native Sarsaparilla

False Sarsaparilla

Purple Coral Pea

Family: Fabaceae

PLANT PROFILE

by Kate Brooks

If you love masses of vibrant purple flowers then look no further than *Hardenbergia violacea*. This hardy, evergreen light woody climber can be seen flowering now all over the coast, from the beach to the bush, and is perfect for adding winter warmth to your garden.

Hardenbergia gains its name from Franziska Countess von Hardenberg, the '19th century Australian patron of botany', while the species name *violacea* refers to the typical colour of the flowers.

There are three *Hardenbergia* species native to Australia with *H. violacea* being the most common. This species is widespread, occurring in Queensland, New South Wales, Victoria, Tasmania and South Australia.

Hardenbergia violacea prefers a moist, well-drained sunny or semi-shaded position, although it tends to flower more profusely in full sun. For best growing/flowering results, plant it in lime-free soil with a neutral to slightly acidic pH and don't allow the soil to dry out between waterings. Once established the plant will benefit from infrequent applications of fertilizer. The plant has no major pest or disease issues and can tolerate frost. Like many evergreen climbers, it has a tendency to scramble up nearby walls or fences, ball at the top and get leggy below. Prune regularly after flowering to maintain compact growth and an even fence coverage.

Hardenbergia is widely cultivated and now has many different flowering forms including white, pink and blue as well as a recently cultivated shrub type. It is also the host plant for the Common Grass Blue butterfly.

Propagation is easy from seed following pre-treatment to break the physical dormancy of the hard seed coat. Pre-treatment can include scarification or soaking in boiling hot water. The seed retains viability for many years. Cuttings strike well if using firm, current season's growth.

Barung's 21st Dinner Party

Guest Speaker:

Her Excellency

The Governor of Queensland

Date: 1 October 2011

Time: 6pm

Maleny Community Centre,
Maple St Maleny

Cost: \$80.00

Bookings:

Barung Landcare Office

Riverside Centre Maleny

07 5494 3151

*Celebrating Twenty-one years of landcare
on the Blackall Range and surrounds*



WORKING FOR OUR FUTURE



FAREWELL DARRYL

by Dawn Worthington

As Manager of Barung Landcare for some six years, Darryl has managed to keep us at the forefront of the environmental movement. Darryl has put in a huge amount of time and commitment, overseeing numerous funding applications, finding ways to take new projects forward, and facing many, many challenges, the most complex being getting our foot in at the Maleny Community Precinct.

It was Darryl's doggedness that has got us the production nursery at Landsborough. His vision and ability to look toward different horizons for solutions is reflected in this and other decisions which expand what Barung Landcare as an organisation is all about.

Darryl certainly has the capacity to think outside the square! This was brought home to me when I listened to his presentation at last year's Queensland Landcare Conference in Caloundra. What Landcare Manager would have thought that making coffee would actually bring in a half decent income, much less a half decent cup of coffee!

Darryl has always been at the helm of the coffee-making machine, whether at the Woodford Folk Festival, Caloundra Music Festival or at the local Witta Markets. I am sure that even Darryl would credit that he can now make a decent cup of coffee. Who is going to put up their hand to do the coffee now, that is the question!

As the saying goes, 'behind every great man there is a fabulous woman' and I will add 'family' to that. To Tina, Ashley and Kyle who have backed up Darryl on so many occasions when it was time to clean up after the market or show, thank you all for your support. You will all be missed.



EDITOR'S NOTE: No, no! Wayne isn't leaving! This photo was taken when it was time to say goodbye to Barung's Bicentenary Lane site.

It's just that it was pretty tricky finding photos of Darryl, Amelia and Gordon, all of whom clearly don't tend to stand still long enough for a camera lens to focus on them.

BEST WISHES TO AMELIA

by Dawn Worthington

Another person leaving us at the end of July is Amelia Ross. She has taken on 'the office' with a single minded determination for one so young!

Amelia was welcomed into the Barung Landcare family originally as a 'barista' at the Witta Markets and soon had made her mark there. She then very ably assisted Steve McLeish with the Maleny Wood Expo and other events, then moved into the office to assist Dennis and the other staff, with Volunteer Co-ordinator being one of her many roles.

Whenever we at the Nursery required assistance, Amelia stepped forward and offered her services, whether with a coffee or administration assistance.

I know that you were only here part-time, Amelia, but your enthusiasm and commitment was noticed by all. We wish you luck with all your future endeavours and hope that you finally complete your studies; then again, one could say that life is one big study! Adieu for now because I am sure that we will see you around.



BYE BYE GORDIE

by ... Dawn Worthington

Och aye! That will be a very much missed comment within the Nursery at the end of July. Our volunteer Gordon Halliday is retiring! Our chief tuber is leaving us, and the hole will be hard to fill.

Gordie, as he is known, has been with Barung on and off for longer than Wayne and I have been here. Gordie loves a laugh and embraces life with passion. His skill at tubing meant Wayne and I could leave him to teach newcomers how to tube; with his deft touch, calm nature and humour, many were put instantly at ease.

Gordie, you will surely be missed. Come and visit when you are able and we can continue to spin a yarn or three! Thank you for sharing your lovely character with us. We are all certainly better people for having known and worked with you.

VOLUNTEER POSITION VACANT

Coordinator of Barung Stall at the Witta Growers Markets

Barung is looking for an enthusiastic person to coordinate the monthly Witta Markets breakfast BBQ.

A regular team of 30 volunteer individuals who rotate every few months needs someone to lead them. Maybe that's you! It's a rewarding task with lots of people contact and raises valuable funds for Barung.

The workload is approximately 2.5 days per month, and includes these tasks:

- Finding and rostering volunteers to cook and serve
- Cooking cakes or finding volunteers to cook cakes
- Shopping for groceries
- Setting up the stall
- Taking the orders and handling money
- Pulling down the stall and cleaning up.

This is a **good fundraiser for Barung** and also supports the local growers by providing a hub where people come to have brekky, a good coffee and a chat while buying their produce and investing their dollars locally. (The coffee cart and plant stall are not included in this position's responsibilities.)

**For more info,
contact Tina Lathouras on 5429 6001.**

The Market is held on the third Saturday of every month, come rain, hail or shine!



Sunshine Coast Council Landholder Environment Grants

Are you looking for some financial help to carry out a conservation project on your property? How about applying for a Landholder Environment Grant from Council to get help with preserving and restoring your own private area of bushland.

The landholder environment grants program is designed to help owners carry out natural resource management activities on privately owned land. Landowners can apply for assistance to carry out:

- fencing to restrict stock access to significant vegetation, wetlands or riparian areas
- installing off-stream stock watering points and stock crossings
- purchasing locally grown native tubestock and materials for the purposes of planting trees to rehabilitate degraded areas or establish vegetation corridors
- modifying existing fencing to make it more wildlife friendly
- soil conservation works, sediment and erosion control
- environmental weed control and bush regeneration to rehabilitate significant native vegetation and corridors
- works or activities aimed at restoring known habitat for rare or threatened species.

To be eligible for assistance you will need to make either a cash or in-kind contribution to the project, or a combination of both.

Other activities may be considered after consultation with Conservation Partnerships Officer. Certain activities are ineligible for funding.

Two rounds of funding will be offered each financial year. Landholders may apply for each round as long as any previous grants have been fully acquitted and the stated outcomes achieved to Council's satisfaction.

Sunshine Coast Council

To start the application process, submit an expression of interest form, available from the Council's website. A Conservation Partnership Officer will then contact you and arrange a time to discuss your project on site. After the site visit you can fill in an application form and submit it prior to the due date.

The Landholder Environment Grants guidelines, factsheet and application process can be accessed at www.sunshinecoast.qld.gov.au/grants or phone 5475 7272.

For **round one**, expressions of interest open on Monday 1 August and close on Friday 19 August 2011. Applications open on Monday 29 August and close on Saturday 15 October 2011.

Round two expressions of interest run from Monday 6 February 2012 to Friday 24 February 2012, with applications open from Monday 5 March to Sunday 15 April 2012.

PLANT CREDIT PROGRAM

With \$250 Barung members can set up a Plant Credit at the Barung Nurseries to give you a discount of 25% on tubestock, megatubes and some more advanced stock, take it as you need it, subject to availability.

More info from Wayne or Dawn at the Nursery on

0429 943 152

INTRODUCING THE GREEN ARMY TEAM

My name is **Sarah** and I am from Alexandra Headlands. I work with the Landsborough Barung Landcare Team. I have a passion for plants and the environment and love working outside. I hope to learn all I can from our awesome supervisor, Kate Brooks! Participating in the Green Army provides me with a perfect opportunity to contribute toward creating a healthier environment for existing and future generations. After Green Army I would like to raise awareness of the numerous ways people can contribute to their local environment.

My name is **Jackson** and I am from Mt Mellum. I applied for Green Army because landcare and conservation is a field of work that interests me, plus I wanted to get back to nature after pipe-

laying for a year. I hope to learn all I can from Green Army, and afterwards I plan to stay in the same line of work and combine it with spotter catching services to help the flora and fauna.

My name is **Brian** and I am from Mapleton. I signed up for Green Army for the experience after completing my Diploma of Conservation and Land Management. My aim is to get a permanent job to maintain the skills that I have acquired on the Green Army. The environment needs our help and if I can give back some of the knowledge I have learnt then I have achieved my goal.

My name is **Nick** and I am from Alexandra Headlands. I joined Green Army because I love the outdoors and plants. I hope to get a job in a nursery or work in retail selling my own plants.

Barung's current Green Army Team, Sarah Dickson, Jackson Wray, Brian Miles and Nick Ford, is led by Kate Brooks.



HINTERLAND BUSH LINKS

by Susie Duncan

Hinterland Bush Links has been connecting with landholders in the Booloumba and Little Yabba Creek catchments at Cambroon. When funding becomes available vegetation restoration work will get underway in this area to contribute to the flora and fauna corridor linking the Conondale and Blackall ranges. This will integrate with works planned by the Little Yabba Park Bushcare Group which is supported by Sunshine Coast Council.

Hinterland Bush Links will be formally launched in the Mary Valley in November this year. The launch event will include a community tree-plant to help support the link between the Blackall Range and the Conondales. Watch the *Barung News* and the Barung website for the date and place.

If you see scope for restoring linkages in your district or would like to contribute to Hinterland Bush Links in any way, please contact me on 5429 6622 or wilderness@hotkey.net.au Financial support would be very welcome; donations can be directed to Barung's Environmental Gift Fund.



Walks with Barung supporters

Sunday 21 August: Diana O'Connor and Eric Anderson will be leading guided walks through the Russell Family Park revegetation project, Montville.

Friday 26 August 2011: Susie Duncan will lead a 10 km walk into the upper catchment of Summer Creek in the Conondales.

Book through www.festivalofthewalks.com.au

LOCAL WEEDS ON FILM, IN ART, AT WORKSHOPS

by Jill Morris

Members of the Maleny Film Cooperative Ltd have risen to the challenge of Weedbuster Week 2011 (5–11 September) and produced four short films on local weeds with Council funding and support. The Arts and Environment sections at Council are turning our local Weedbuster Week into Weedbuster Month with multiple screenings of the films along with allied arts workshops involving weeds in dyeing, weaving, painting and writing.

The four films will be presented to the Maleny public on Friday 9 September from 5.30 pm at the Maleny Library. Friends of the Library will be using the event for fund-raising and will be charging \$5 admission (children free) in exchange for drinks and nibbles. Bookings must be made beforehand at the Library.

The films will then be toured to libraries throughout the Sunshine Coast Council region during Weedbuster Week, with allied workshops in *Weaving with Weeds* and *Dyeing with Weeds*.

COMA (Collaboration of Maleny Artists) is joining the eco-arts campaign with a fortnight-long exhibition of artworks entitled *Maleny Image 9: Introduced* which will have a gala opening on Friday 2 September at the Maleny Library, also at 5.30 pm. The COMA exhibition will be at the library from 29 August to 11 September, after which it will move to the UpFront Club.

Throughout the month of September a number of practical workshops, one with film screenings, will be held in the new Arts & Ecology Centre in the Maroochy Bushland Botanic Gardens. A Weed Monster sculpture will be 'grown' over the whole month in

the Centre as it incorporates contributions from the libraries' workshops: a bamboo structure adorned with weed vine weavings, fabric dyed with weeds and words expressing information and emotions about weeds.

The four short films are:

- *Weeds, Wonderful Weeds!* by Jill Morris, a tongue-in-cheek artistic documentary highlighting the beauty of seven of the most challenging invasive weeds, featuring local people Lin Fairlie, Susie Duncan, Jackie Montgomery, Raine See and Joan Dillon
- *Weeded Out*, a comedy animation by Leanne Farmiloe: Cane Toad and Scotch Thistle travel to Canberra, demanding re-classification on the grounds of long-term residency
- *Slow Down – Everything's Connected* by Jess Begun: a documentary exploring weeds in long-term ecology, via interviews with Ed Surman and Barung's Wayne Webb
- *Code Red: Madeira!*, a comic melodrama by Christine Elcoate about a Maleny couple who discover Madeira Vine on their land and call some mates to help locate the source.

Barung staff and members have been an amazing help to all of us, providing information, film talent, letters of support, philosophy and inspiration. Thank you in particular to Darryl Ebenezer and Eric Anderson for their letters of support to accompany our Council funding applications.

For further information about the films, phone me, Jill Morris, on 07 5494 3000.

ECOFICKS IS A WINNER!

A wide range of topics including shorebirds, litter, invasive weeds, tree hollows, school revegetation and veggie garden projects, biodiversity, threatened species and marine pollution were covered by the entries in the 2011 Ecoflicks Film Festival, coordinated by the Noosa Integrated Catchment Association and held at Sunshine Coast Environment Council's (SCEC) World Environment Day at the University of the Sunshine Coast.

Ian Mackay's film "Cat's Claw Crusaders" won the Most Inspirational Award. Master of Ceremonies, Susie Chapman of SEQ Catchments, said she was most inspired by Steve Burgess, interviewer, and Gillian Crossley, a Gympie Landcare member who works at the Landcare nursery propagating the biocontrol agent, the tinged bug, and who also battles cat's claw creeper and various other weed invaders at her Widgee property.

Ian's film "Where Home is a Hollow" about Hollow Log Homes received the Most Informative and Entertaining Award. Both Ian's films, each 7 minutes long, can be viewed on www.youtube.com

Congratulations also to John Joseph and Year 4/5 at Mooloolah State School who won the People's Choice for their film "Our Outdoor Classroom" (also on YouTube).

Ecoflicks received a DERM Awareness grant to mentor school students, so NICA partnered with Sunshine Beach High School and hired the Noosa Ferry for a few days and showcased all the community Natural Resource Management initiatives in the catchment to over 70 students. Their job was to create a film about any one of those projects. Nine of those students were award winners!

Di Seels, who received the Best Film Award (the Grand Prize) for her film, "They Belong to All of Us" about turtles and marine garbage, attended the Queensland School of Film and Television free workshops organised by NICA in Brisbane.



Inspirational, passionate and educational! Multi-award filmmaker Ian Mackay, major sponsor manager, Peter Homan, and NICA coordinator, Maree Prior, at the Ecoflicks 2011 Awards presentation.

THE APPLE NEVER FALLS FAR FROM THE TREE?

Birds, Bats and Rainforest Seed

by Susie Duncan

You probably know the saying about the destiny of the apple. It usually has the negative connotation that children tend to replicate their parent's failings.

But do fruiting trees invariably drop their seed beneath their boughs and does it matter? In rainforest it does matter because the parent tree will tend to shade out the germinating seedling and will compete for nutrients, and in drier periods the parent will suck up most of the water. And it's good to spread seed away from the tree of origin as this creates genetic flow through the forest. So getting the apple away from the parent tree in this case is good.

But how can rainforest fruit get out and about? Well, many animals play a really important role by ingesting the fruit, seeds and all, travelling to another site and defecating the seed. Sometimes the process of digestion assists in the germination of the seed. For example fruit doves have 'lump-lined' stomachs which appear to treat seeds so that they have greater germination success. The other special feature in fruit doves is their distensible gape which allows them to swallow larger fruits and seeds than other birds in this region. This means that they are the only ones that will disperse those particular large-fruited rainforest species.

So we can imagine that all these wonderful dispersers, particularly birds and bats, are busy spreading rainforest seeds night and day. But this is not the case everywhere. Many rainforest patches are small and isolated as a legacy of previous landclearing, and some of the dispersers such as fruit doves, bowerbirds and tube-nosed bat just don't get to them. There isn't a big enough reward for the effort of flying across cleared country, quite apart from the increased risk of being eaten by hawks and owls. So if a fruit dove doesn't get to a remnant or regenerating patch of rainforest, neither does the particular seed that it alone can swallow or assist in germinating.

This understanding becomes crucial when we set about restoring vegetation in cleared or disturbed areas. If the site is not near to an extensive rainforest patch, it will probably be necessary to include seed or seedling stock of certain plant groups that won't be brought to the site by particular dispersers. Cath Moran, who has undertaken the research that tells much of the story above, has come up with a list of plant families that need to be in these plantings. It includes laurels and lillypillys, as well as those that have fruits wider than 1cm. The full list of families is described in Cath's recently released brochure which is available from the Barung Landcare office or online (see below for details).

There are other dispersers that are a bit more cosmopolitan, such as the Lewin's Honeyeater and Figbird, so they may get to a

The Wompoo Fruit-dove disperses large rainforest fruit but will not readily visit isolated rainforest patches.

[Photo by Eric Anderson]



restoration site and happily poop out some seed from far afield. But they won't linger or return unless they find enticing fleshy-fruited plants on which to dine. So Cath has also listed the plant groups that are appreciated by a wide range of seed dispersers, for example palms, figs and Celerywood. She suggests planting them at high densities at revegetation sites.

Restoration doesn't have to happen on a grand scale. Just planting a native fig tree in your yard can be enormously rewarding when you see the diversity of birds that come by for a meal. And at the same time you are making a great contribution to restoring the ecology of this beautiful region.

Reference:

C. Moran (2011) 'The important role of birds and bats in rainforest regeneration: Information for rainforest management.' Fact sheet prepared by Griffith University for World Wide Fund for Nature (Australia).

Available at: <http://www.griffith.edu.au/environment-planning-architecture/environmental-futures-centre/publications/materials-for-environmental-managers>

BARUNG WELCOMES...

New Members

Sue Bartlem
Lukas Clay
Lauren Gartrell
Marie Jackson
Pramuk Jay
Peter, Karen & Emma May
Ann McGrath
Vicky Slatter
Robert Walton

Rejoined Members

Elaine Charles
John Elkins
Ken Ferrier & Joanne Taylor
Warwick Grace
Jason Searle



*Donations to the
Barung Environmental Gift Fund
are TAX DEDUCTIBLE!*

**Montville
Coffee**

100% Fairtrade Organic
What's the story in your cup?

Karen & Richard Barnett

07 5478 5585
montvillecoffee.com.au
info@montvillecoffee.com.au
Available in local stores and online



Cert. No. 4200P FLO ID 3340

NURSERY OPEN, OUT AND ABOUT

NURSERY NOTES by Dawn Worthington

First and foremost we need to pass on our thoughts and prayers to Wayne whose father, Wally, passed away on Sunday 10th July 2011. Our regards to Wayne, Janet, Ryan and Jessica at this time.

The Nurseries

The Barung Nurseries are looking fabulous – the plants are anyhow! So even though it is winter many people are still planting, especially in the frost-free areas, due to the high moisture content in the soil.

Caloundra is open on Mondays only at this stage, with me being there while Kate is supervising the Green Army crew for the next couple of months. Welcome to all the Green Army participants and congratulations on getting your placements. We look forward to working with you all during the next couple of weeks.

Onto **Porters Lane**, where we are open from Tuesday to Friday. Kate and her crew will be there when I am not.

Landsborough is progressing well, with Jonathan Waites and the apprentices doing a fabulous job there. I think the next step is for Wayne to put together the sand filtration unit. We will be saying good bye to the apprentices in the next couple of weeks, so thank you to Ian, Oskar, Neil and Luke who have gained an amazing array of experience whilst completing their Certificate III in Horticulture. Great effort guys!

We have a large range of species available, so come and check us out. Our currently available species are listed on the Barung website: go through the links to the Nursery tab. You never know, we may just have what you are after, or may suggest an even better substitute! If you do visit, especially in Maleny, please do rug up as the wind can be very cruel if you are not prepared.

Take care, happy planting, and we look forward to seeing you soon at whichever nursery you choose.

World Environment Day

On Sunday 5th June 2011, we attended the World Environment Day celebrations at the University of the Sunshine Coast. With the assistance of our very able-bodied volunteer, Clare Sluggett,

Wayne and I set up and attended a stall with our beautiful plants, books and so forth. As usual the weather was bitterly cold with a howling wind – this seems to be the hallmark of this event. This year we were prepared for it!

The day was a success when you consider our objective was to educate the public about what we do and what they themselves can do to make a difference; whether they have a town house, own a 400 m² suburban block or live on 400 acres it makes no difference.

The sun warmed us during the middle of the day which was heartening. When we had a chance to wander around the site it was very rewarding to see all the younger children there with their parents.

A thanks must go out to Lin Fairlie who ‘just popped in’ to give us a break. Darryl and his ‘coffee’ team were also in attendance around the corner in the sun – we must discuss the positioning next year!

Queensland Garden Expo

Thank you, thank you, thank you to all the people who assisted me in getting the stall up and running for the Queensland Garden Expo. Wayne was taken up with his family’s circumstances at the time and this meant the rest of us had to rally, and rally we did, let me tell you!

The volunteers who assisted me before, during and after the event deserve a special mention. Without you guys I could not have done it at all, there are too many to list individually. Thanks heaps. I realise I am being a bit repetitive, but really I can hardly say ‘thank you’ enough.

The QGE was on Friday 8th July through to Sunday the 10th at the Nambour Showgrounds. It was a resounding success given that we had no idea what to expect, what to take or how to present our plants! We had a site which we shared with Jake and the Coolool Community Native Nursery within the Living Backyard section. Credit must go to Sunshine Coast Regional Council’s Michael Gillies and his team who set up a spectacular display of a ‘backyard’ which included a pond, dry watercourse, a BBQ, lawn, native bee boxes, possum and lorikeet boxes and even a clothes line! The many patrons (30 000 people were expected through the gates) thought it was a fabulous idea and we hope to participate again next year.

We did up ‘theme’ bags and had tube stock for sale. The themes we did were Rainforest Trees, Understory, Bush Tucker, Butterfly Attracting, Screening & Hedging Plants, and Frog & Pond Friendly Plants. These were presented in paper bags with handles and we had put an assortment of eight tube stock in each bag. These theme bags were very popular and are certainly worth considering for future events.

Vollies for events

Talking about events, if there is anybody who is interested in becoming a Travelling ‘Barung-bury’ (our take on the Travelling Wilburys), please give me a call at the nursery and I will place your name on the list to be contacted about helping when we have events coming up in future! I would be delighted to have you on board.

Barung flying the flag at the Queensland Garden Expo.



SOME LOCAL INVADERS

by THE GREEN ARMY TEAM

MADEIRA VINE by Brian Miles

Anredera cordifolia or **Madeira Vine** is a class 3 declared plant under Queensland legislation. This plant is a vigorous climber that can produce thousands of aerial tubers along its entire stem. It smothers the plant that it attaches to and has potential to smother entire ecosystems if left uncontrolled. It is a native of South America with light green heart-shaped leaves that are wide and fleshy, and approximately 4 to 5 cm in length. The flower spikes are 10 cm long with numerous individual small flowers that resemble lambs' tails. Different control methods work best to control this plant.



CATS CLAW CREEPER by Sarah Dickson

Macfadyena unguis-cati or **Cats Claw Creeper** was originally native to Tropical America, and was used as an ornamental in older Queensland gardens. Due to its aggressive climbing capabilities, it completely smothers native vegetation and has therefore been declared a Class 3 species under the *Land Protection Act 2002*. As indicated by its common name, the Cats Claw Creeper grows three-clawed tendrils which bind the vine onto the host tree. It also bears bright yellow flowers in spring and narrow flat pods that contain many seeds, making the Cats Claw Creeper hard to eliminate. The best control method is chemical treatment because digging out the tubers is not always practical.



CAMPHOR LAUREL by Nick Ford

Cinnamomum camphora or **Camphor Laurel** is native to Japan, Taiwan and some parts of China. Camphor Laurel is a class 3 declared pest plant under Queensland legislation. This pest plant aggressively replaces native vegetation, invades pastures and disturbs riparian systems. Camphor Laurel develops massive root systems which can block drains and crack concrete structures, push over fences and disrupt power facilities. It replaces native trees such as blue gums which are essential for koala survival. Camphor Laurel is a large evergreen tree, growing up to 20 m tall. The leaves are glossy green above and have a grey waxy appearance below. In spring it produces small white flowers, followed by spherical fruit that are 10 mm across, initially green then black when ripe. Chemical, mechanical, fire, and biological methods are used to eliminate this plant.



SINGAPORE DAISSY by Jackson Wray

Sphagneticola trilobata or **Singapore Daisy**, a Class 3 pest plant, is native to tropical America and is a vigorous ground cover that will smother seedlings, ferns and other shrubs. It also invades environmental areas. Singapore Daisy has pairs of lush three-lobed leaves and produces small orange/yellow, 2 cm, daisy-like flowers and varied amounts of seed. Singapore Daisy spreads mainly via cuttings (including slashing and pruning), so it is crucial that Singapore Daisy material is disposed of appropriately. The best control method is hand pulling and herbicide treatment.



[All images are from the Queensland Primary Industries & Fisheries 'Photo guide to weeds' webpages:
www.dpi.qld.gov.au/4790_10232.htm]

Watch the Barung website for events & bookings: www.barunglandcare.org.au

EXPERIMENTING

THE ORNAMENTAL GARDEN by Joan Dillon

It's been a good time lately both to catch up on the maintenance (weeding) and to do some experimenting before the rapid growth season is again upon us. Weeding wasn't much of an issue as most weeds like plenty of light and the majority were on the outer edges of garden beds. It really pays to grow ground covers and/or shrubs that exclude the light with dense low foliage.

With less need to devote time to maintenance issues in the revegetation, there's been an opportunity to trial some of my favourite smaller plants in hanging baskets, large pots and a few very well-drained areas close to the house. Not all of course are strictly rainforest plants but they are certainly native to the broader region.

In the hanging baskets *Lobelia trigonocaulis* and *Lobelia alata* are doing very well. The flowers of the latter are rather insignificant but it produces a veritable cascade of long trailing stems. The bright yellow flowers of *Hibbertia aspera*, a plant of the eucalypt forest, make a colourful display in spring and my favourite little lily, *Tripladenia cunninghamii*, is very reliable in both a basket and a pot.

One of my all-time favourite shrubs, *Persoonia virgata* Wallum Geebung, is thriving in a tub in a sandy mix. This species would not tolerate my heavy clay. *Persoonia* is wild harvested for its foliage, and various research projects have been endeavouring to ascertain how to germinate the seed and turn it into a crop so

that it can be better protected in the wild. Jake at the Cooloom Community Nursery managed to germinate some very old seed so some of us are now growing it. I'm looking forward to mine flowering in due course.

Acacia hubbardiana, available from Barung, is coping in the ground and is flowering, so I'm hopeful that it will last but I'll wait for the next wet season to see what happens. The same for *Mirbelia rubiifolia*. I'm keeping my *Blandfordia grandiflora*, Christmas Bell, in a pot for the time being as it does prefer excellent drainage. The plants are clumping and it will be worth attempting to divide them. The flowers were beautiful during the summer but the seed lost viability before I planted it, a mistake I shall not repeat. The native iris, *Patersonia sericea*, appears to be quite adaptable and is in its second year of flowering.

I've been very impressed by the growth in the Xanthorrhoeas, or grass trees, which are stunning garden plants once they become established. The tiny *Lobelia membranacea* is happily spreading unassisted in a shaded area and becoming a very low/no maintenance ground cover. It just seems to be in the right spot but would be unlikely to compete well with more vigorous ground covers.

A very reliable plant for most situations is *Scaevola aemula*. Clearly, most of these plants are not local to Hunchy but for spring colour and to add a little variety, they are a whole lot better than petunias (or other exotics)! Experimenting is fun; just remember to record the results.

Hibbertia aspera.

[Photo by John Dillon]



RESOURCES

Climate Change and Queensland's Biodiversity: 2 DERM REPORTS

Building Nature's Resilience: a Draft Biodiversity Strategy for Queensland places biodiversity at the centre of conservation efforts for the state. The strategy highlights the need for better understanding of the current and emerging threats to biodiversity, such as the impacts of development and climate change.

DERM commissioned scientist and author, Tim Low, to conduct an independent scientific study on biodiversity health, ecosystems and landscapes across Queensland. His report, **Climate Change and Queensland Biodiversity**, addresses Queensland's 13 bio-regions and looks at some of the anticipated effects of climate change including increased climatic variability; changes in the extent and frequency of drought; fire and rainfall; habitat vulnerability, and what this may mean for Queensland's species. The report acknowledges the complexity of these issues, and suggests some approaches for managing the likely impacts of climate change on biodiversity and encouraging ecosystem resilience. The reports:

www.derm.qld.gov.au/wildlife-ecosystems/biodiversity/climate-change-report.html



A BOLETE

FUNGAL FORAY by Gretchen Evans

Many of you have probably heard of or perhaps even eaten Italian mushrooms – *porcini*. They are often used in TV cooking shows where the chef adds a little dried *procini* to other mushrooms to add extra flavour. This is an example of a famous edible European bolete.

Most boletes look like fat mushrooms with thicker stalks. While the spores in mushrooms are borne on gills, in boletes the spores are borne in tubes which appear like holes or pores. I have already described an example of a polypore in a previous *Barung News*. Polypores are usually woody or leathery and boletes are more fleshy.

At least eight types of boletes are found in Queensland. To identify them it is necessary to look at the spores under a microscope. PLEASE do not try to eat any boletes you may find as MANY ARE POISONOUS.

Boletellus emodensis is a bolete I have seen along the Obi track of the Great Walk. It usually grows in the bark on the side of Eucalypt or Casuarina trees. It has a shaggy cap up to 10 centimetres in diameter with a reddish tinge. If the flesh is cut or bruised it will turn blue/green almost immediately.

Boletellus emodensis.
[Photo by Fran Guard]



BARUNG RESOURCE CENTRE

Shop 3, Riverside Centre, Maleny

MON to FRI 9 am - 4 pm

5494 3151

info@barunglandcare.org.au

BARUNG NURSERIES

at Maleny, Caloundra & Landsborough

0429 943 152

nursery@barunglandcare.org.au

MALENY Nursery

Porters Lane, North Maleny

TUES to FRI: 9 am - 3 pm

GEORGE ST Community Nursery

9 George Street, Caloundra

MON: 9 am - 3 pm

LANDSBOROUGH Nursery

135 Forestry Road, Landsborough

Under construction: opening late 2011



Barung Contracting Services

revegetation
bush regeneration
landscape rehabilitation
environmental weed control
project planning & management
indigenous tubestock
consultancy & property planning
onground conservation works

contracting services 0429 943 156

barung landcare 07 5494 3151

contracting@barunglandcare.org.au

www.barunglandcare.org.au

**Maleny
SUPA**



Rob and Samantha Outridge

* FRUIT & VEGETABLES * DELICATESSEN * MEAT *

26 Maple Street, Maleny

Phone: (07) 5494 2257 Fax: (07) 5494 2767

Please keep showing your ...

Barung Community Benefit key tags

... when shopping at Maleny IGA.

Thanks for showing your support.

WHO AM I AND ...

Can you identify each of these animals and answer their questions?

SUSIE DUNCAN'S WILDLIFE QUIZ



1

1. What happens to males of my species after they mate? (I am found in sub-tropical rainforest.)



3

3. Where do I shelter?



5

5. Where do I shelter? (I am a small species found only in upland streams of the Blackall & Conondale ranges.)



2

2. What do I mainly feed on in SE Queensland? (I am a threatened species.)



4

4. What rainforest plants do my caterpillars feed on?



6

6. What do I feed on? (My shell diameter is 40-50mm.)

**ANSWERS
are on
page 14.**

Photo acknowledgements:

Wayne Lawler (1, 5)
Susie Duncan (2)
Tony Bright / AWC (3, 4, 6)

BOOK REVIEWS

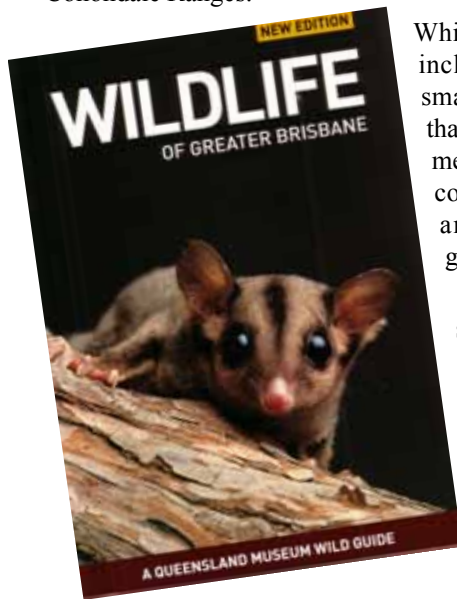
WILDLIFE OF GREATER BRISBANE

A Queensland Museum Wild Guide

BOOK REVIEW by Pam Watson

This easy-to-read field guide is the first step to learning about the wildlife of the Greater Brisbane Region.

For the purposes of this guide, although not officially defined, the 'Greater Brisbane' Region is regarded as taking in Caboolture, Mount Mee and a further 100 kilometres to the north and west of these areas, such that it also covers, generally, the Blackall and Conondale Ranges.



Whilst it is not possible to include every species in a small book like this, more than 1000 are described or mentioned and the selection covers the most common animals in most major groups.

The invertebrates section covers worms, molluscs, arachnids, crustaceans and insects. Vertebrates covers fishes, frogs, turtles, lizards, land snakes, birds and mammals (including introduced species).

Each entry has a common name, followed by the scientific name, identification, habitat and range, handy notes and a colour plate. Detailed line drawings aid identification, and interesting tidbits of information are scattered throughout.

This is an engrossing field guide that had me reading and comparing for hours. Hundreds of full colour photographs. Separate index of common and scientific names. Second edition, soft cover, 428 pages. Price \$30.00.

MALENY : AN ALTERNATIVE HISTORY

by Elaine Green

BOOK REVIEW by
Lin Fairlie

Elaine Green's latest book is certainly worth reading by all long standing, as well as more recently arrived, residents of the Maleny area. As with many histories, this one is slightly provocative in parts. However it explains the significance of some of the often-heard names around town and puts many of our current experiences in our community into perspective.



Interestingly the first cooperative in Maleny was not the Credit Union, Upfront Club or Maple Street food coop. It was the Maleny Dairy Cooperative which formed in 1904. In 1954 there were 300 dairy farms in the area. Most of the new houses in Maleny have been built on former dairy farming land. The deregulation of the dairy industry in 2000 saw the threatened industry give rise to new local industries, with Maleny Milk and Maleny Cheese distributing their produce widely in the south-east corner of Queensland.

The section of the book on Crystal Waters will probably fill in gaps for many more recent Maleny residents. When you take some green waste to the Witta dump, spare a thought for Waste Busters, as the initiators of the dump were known. Many coops, including the Maleny Credit Union, Maple Street Coop, Upfront Club and Peace of Green, can all trace their histories back to the influence of Jill Jordan.

Elaine includes extracts from an article by Jill Jordan on Cooperatives which talks about the numbers of jobs created within the community and the many local people who have started their working lives in the coops.

Some of you may not have heard of the threat to Maleny's Obi Obi Creek by the proposal to build a concrete batching plant on its banks. This was an early example of Maleny community action resulting in an unsatisfactory project proposal being abandoned. *An Alternative History* moves on to more recent events, including the proposal to build a dam on the Mary River at Traveston Crossing and the opposition to building a Woolworths supermarket beside the Obi on the site of the former cattle sale yards.

In the chapter 'Maleny Working Together' Elaine reports on three scenarios for the future of Maleny. Following amalgamation of coastal shires and a certain level of discontent on the coast, the time may well come for discussing the formation of a Hinterland Shire. Elaine's perspective on this topic is well worth considering.

Understanding our history can illuminate our current experiences and inform our understandings and decisions. Elaine's book helps us to develop our personal feeling for what has made Maleny the community we experience today.

Soft cover, 136 pages, B&W, \$16.

The Barung Bookshop

Riverside Centre, Maleny

More than 40 book titles,
posters, CDs, cassettes
& gift ideas

[www.barunglandcare.org.au/
publications1.html](http://www.barunglandcare.org.au/publications1.html)



Garden seating transformed by Alan Bannister for the enjoyment of vollies and staff at Barung's Porters Lane Nursery.

BUSINESS CONTRIBUTORS

Earthcarer
eContent Management &
Life Artistry
Lapmist Pty Ltd
Lions Club of Maleny
Northey Street City Farm

SUPPORT Barung Landcare through YOUR MEMBERSHIP

Individual/family MEMBERSHIP \$ 25 pa

This entitles you to the bimonthly *Barung News* and two free trees from the Nursery, and enables you to support Barung Landcare's work in preserving and enhancing the natural environment of the Blackall Range and its environs.

BUSINESS SPONSOR \$275 pa

Business Sponsors (\$275/year) are entitled to

- a business card size advert in Barung's bimonthly newsletter (1000 distribution) x 6 issues
- acknowledgement of your support at Barung displays
- three (3) free trees, and
- membership discounts on plant purchases in the Nursery.

BUSINESS CONTRIBUTOR \$ 55 pa

Business Contributors (\$55/year) are entitled to

- listing in the Barung News as a business contributor
- acknowledgement of your support at Barung displays
- three (3) free trees, and
- membership discounts on plant purchases in the Nursery.

Forms are available from the Barung Office.
DONATIONS of \$2 or more are TAX-DEDUCTIBLE.

THANK YOU TO ...

... **Ian Webster** and **Dianne Lanskey** for Brother P-Touch 1000 – great for printing names etc on files and so forth

... **Alan Bannister** for his tremendous effort with restoring the donated outdoor furniture – it truly stopped me in my tracks! Fabulous job! I have since discovered that the table was hoisted over the nursery gate – it was like the fairies had visited!

... **Don & Fay** from **Blackall Range Nurseries Pty Ltd** at Dulong who have long supported Barung Landcare with quality stock often free of freight charges – wherever we are, at the Maleny Wood Expo & many other events, this business always supports us

... June's intrepid *CodLine* folders: **Gretchan Evans, Gordon Halliday, Dougall Blanch, Ruth Blanch, Noel Denning, Sheryl Underwood, Christine Scattergood, Pamela Owens** and **Deanne Grace**

... **Roslyn Trevellien** for donating tubestock pots to the nursery.

David Woolston
A.M.I.A.M.E.



'A' Grade
MECHANIC

RANGE AUTO & FUEL INJECTION CENTRE
ACN: 088 360 310 Pty Ltd

ALL MECHANICAL REPAIRS and SERVICING
 ELECTRONIC FUEL INJECTION SPECIALISTS
 BRAKE & CLUTCH SERVICING

12 LAWYER STREET
MALENY Q 4552

Tel. (07) **5494 3077**

PLANT LISTS

Look for the current plant lists
on the Barung Website
under the **NURSERY** tab

www.barunglandcare.org.au

More info from Wayne or Dawn at the
Nursery on **0429 943 152**



ANSWERS (from page 12)

SUSIE DUNCAN'S WILDLIFE QUIZ

1. Subtropical Antechinus *Antechinus subtropicus*. All the males die.
2. Glossy Black Cockatoo *Calyptorhynchus lathami*. Seeds in the cones of she-oaks: Forest Oak or Rose She-oak *Allocasuarina torulosa* and Black She-oak *Allocasuarina littoralis*.
3. Southern Spotted Velvet Gecko *Oedura tryoni*. Cracks in granite rock outcrops in dry forest.
4. Regent Skipper Butterfly *Euschemon rafflesia*. Large-leaved *Wilkiea macrophylla*, Common or Veiny *Wilkiea Wilkiea huegeliana*.
5. Mountain Freshwater Crayfish *Euaestacus wrospinosus*. In burrows that I dig along the creek bank.
6. Fraser's Land Snail *Sphaerospira fraseri*. Fungi.

EVENTS

SPRING WILDFLOWER FESTIVAL

16 August - 3 September, Sunshine Coast Region

Enjoy free guided walks throughout the Sunshine Coast region, talks, exhibits and workshops. Bookings are essential as spaces are limited on these walks.

Info, program, & bookings: Go to Council's website: www.sunshinecoast.qld.gov.au, navigate through Events Calendars to the What's On Calendar, and Search events for: wildflower

SUNSHINE COAST WALKS FESTIVAL

19-28 August, Sunshine Coast Hinterland

Nine day festival of guided walks, competitions, community and cultural events celebrating the natural beauty of the Sunshine Coast Hinterland.

Info & Bookings: www.festivalofthewalks.com.au

MALENY IMAGE 9: INTRODUCED

Friday 2 September 5.30 pm, Maleny Library

COMA art exhibition opening of artwork inspired by ideas around introduced environmental weeds. On display 29 August to 11 September. Opening event FREE, bookings essential on 5429 6222.

WEAVING WITH WEEDS

Monday 5 September 1.30-4.30 pm, Maleny Library

Practical arts workshop with Judy Wolski, with screening of shorts from four locally-made films about local invasive weeds. FREE, bookings essential on 5429 6222.

MALENY FILMS BUSTING WEEDS

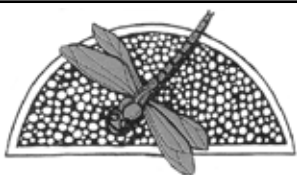
Friday 9 September, 5.30 pm, Maleny Library

Screening of four weeds-themed films made by Maleny Film Cooperative members: Jill Morris, Leanne Farmiloe, Christine Elcoate and Jessica Begun. Also performances about weeds in poetry and song. A Friends of the Library fund-raising event (\$5 adults; children free) offering drinks (non alcoholic) and nibbles. Bookings essential on 5429 6222.

NATIONAL LANDCARE WEEK & WEEDBUSTER WEEK

5-11 September, Everywhere!

More info: www.landcareonline.com.au
www.weedbusters.info



Montville Mist

Still Spring Water

Joseph McGladrigan

Ph: 07 5442 9411 Mobile: 0408 522 585

Email: montvillemist@hotmail.com

Bottled at the Source

QUEENSLAND LANDCARE CONFERENCE

20-23 September, Ayr

Generations of Guardians: the program features speakers from varying age groups and backgrounds. Keynote speaker, Dr Linda Selvey, CEO Greenpeace Australia Pacific, will speak about Australia's food security. More than 30 concurrent presentations and four field trips.

More info: www.landcare.org.au/CONFERENCE.htm

14th INTERNATIONAL RIVERSYMPOSIUM

26-29 September, Brisbane

The conference will explore how rivers are valuable, ranging from economics through to cultural and spiritual values; also a prominent focus on natural disasters and their value to waterways.

More info: www.riversymposium.com

EIANZ ANNUAL CONFERENCE

Facing the Future - Actions for the Environmental Profession

28-30 September 2011, Novotel Twin Waters Resort

How does the modern environmental professional approach the global challenges of sustainable development, efficiently and equitably providing for a rapidly growing human population, and reducing environmental impact?

More info: www.eianz.org.au/conference/facing-the-future-actions-for-the-environment-prof

Barung 21st Dinner Party

Saturday 1 October, Maleny Community Centre

Celebrate Barung's 21st Birthday in style! Numbers limited, bookings essential on 5494 3151.

Barung ANNUAL GENERAL MEETING

Saturday 5 November, Venue to be announced

2011 LANDCARE VOLUNTEERING SURVEY

Landcare Australia Limited is seeking to gain an understanding of the operating environment of the Landcare movement and its needs by surveying people who are actively involved in their local Landcare group.

If you play an active role in the Landcare movement (including catchment, coast, bush, river and dune care or 'friends of' groups, or any group in the community participating in voluntary environmental or sustainable land management activities), they would greatly appreciate your assistance in completing a 10-15 minute survey.

Everyone who fully completes the survey will go into a draw for one of 20 grants worth \$500 for their group.

The survey closes on Sunday 7 August 2011. The \$500 grant winners will be announced on or before 26 August. Go to:

www.surveymonkey.com/s/landcare_landscape-2011-landcare-volunteering-survey

Barung gratefully acknowledges funding & support from:



And also the Business Sponsors and Contributors whose advertisements appear in the Barung News.

THE BARUNG FAMILY

BARUNG 2010/11 VOLUNTARY MANAGEMENT COMMITTEE

President	<i>Eric Anderson</i>
Secretary	<i>Pat Fuller</i>
Treasurer	<i>David Binstead</i>
Committee Members	<i>Glenn Donoghoe</i>
	<i>Lin Fairlie</i>
	<i>Kate Fraser</i>
	<i>Diana O'Connor</i>

BARUNG STAFF

Barung Resource Centre & Projects

<i>Jonathan Waites</i>	Projects Officer
<i>Steve McLeish</i>	Barung Events
<i>Kate Brooks</i>	Green Army Team Supervisor
<i>Den Lalor</i>	P/T Admin/Project Support Officer
<i>Eve Witney</i>	Editor, <i>Barung News</i> and <i>The CODLine</i>

Barung Nurseries

<i>Wayne Webb</i>	Nursery Manager
<i>Dawn Worthington</i>	Assistant Nursery Manager

Barung Contracting Services

<i>Matthew Bateman</i>	Team Leader
------------------------	-------------

And our many Volunteers, Labour Team Participants, and Members