

BARUNG

LANDCARE NEWS

May - June 2011



WORKING FOR OUR FUTURE

Barung Landcare

PO Box 1074
Maleny QLD 4552

Barung Resource Centre

ph 07 5494 3151
fax 07 5494 3141
info@barunglandcare.org.au
Riverside Centre, MALENY

Barung Nurseries

ph 07 5439 9879
nursery@barunglandcare.org.au
Porters Lane, NORTH MALENY
135 Forestry Road, LANDSBOROUGH
9 George Street, CALOUNDRA

www.barunglandcare.org.au

2011 WOOD EXPO JINXES RAIN!

by Mim Coulstock

After the week of heavy rain leading up to the 2011 Maleny Wood Expo – a week that almost had Coordinator Steve McLeish tearing his hair out – it was hard for organisers to wipe the smiles off their faces when Saturday 30th April dawned clear and sunny!

It seemed like everyone wanted to be out and about in the sunshine as the cars poured into the Showgrounds, filling the top oval and overflowing to the point where the 'Parking Full' signs went up.

Around five thousand visitors flocked to the Showgrounds over the weekend, keeping the army of volunteers on their toes. Survey results once again awarded our volunteer army the highest accolades for their friendliness and helpfulness to visitors. Thank you all.

And the wood – what a fantastic selection of timbers, styles and finishes – the innovativeness and talent of our woodworkers never ceases to amaze us. They slab and carve, whittle and polish, cut and rebuild our beautiful native timbers into works

of art that draw people from all over south-east Queensland to this event year after year.

Many wood exhibitors reported good sales at the event and commissions to work on over the coming months – the sign of a truly successful wood show.

Visitors were seen struggling with bags of native plants from the Barung Nursery tent, local produce from Taste Maleny, and slabs of timber from the Millers Paddock.

Children danced with delight every time the bubble machine filled the air with sparkling jewels and Great Scott held both children and adults in the palm of his hand as he juggled and performed amazing feats with a hilarious running commentary.

The Taste Maleny Music Stage drew crowds whenever performers took to the microphones. With its generous seating and tables this was the place to sit back and over-indulge in the broad range of foods available – from coffee and wicked donuts to samosas and sandwiches.

And among it all Darryl Ebenezer was seen cruising the site on a Segway – definitely an Expo highlight!

... Continued on page 6



BUILDING THE LANDSBOROUGH NURSERY

Sunshine Coast Native Plants & Jobs Growth Project

by Jonathan Waites

The establishment of the new Barung nursery at 135 Forestry Road, Landsborough has kicked into top gear following some recent sunny weather allowing us to begin the necessary earth-works on the site.

Having spent many hours taming the surrounding landscape (felling slash pine, slashing, cleaning up rubbish) and renovating the future office area (patching gyprock, painting walls and ceilings) we have now begun to 'flatten out bits'. This is where the propagation tunnels, shade house and growing out area will be placed.

So far the project has afforded our four apprentices (funded by the Australian Government Department of Education, Employment and Workplace Relations through the Sunshine Coast Native Plants & Jobs Growth Project) and three Green Army placements (supported by the Queensland Department of Employment, Economic Development & Innovation) with a smorgasbord of experiences. These include but are not limited to: chainsaw operation, brick laying, concrete retaining wall design and construction, slab construction, building repairs and renovation (constructing a propagation tunnel, hanging

Barung Landcare Native Plant Production Nursery

(Under Construction) Opening 1st July 2011
135 Forestry Road, Landsborough

Contact for all Barung Nurseries:

07 5439 9879

nursery@barunglandcare.org.au



roller doors), brushcutting, tractor operation (slashing, dragging, bladework), drainage design, welding (constructing benches), laying poly pipe, fencing, and so on and so on – have a look at the photos.

We still have a few jobs to do: spread road base, black plastic and gravel over our shadehouse and growing out areas; finish the propagation tunnels and shadehouse; put in the irrigation, filtration and drainage systems; and numerous other little (and not so little) jobs. All this by the end of June, and then we'll have a new nursery. I'll keep you posted.

Clockwise from above: Finishing part of the slab floor for the propagation tunnel; Concreting retaining walls; Painting the new office building; Entrance at 135 Forestry Rd; Levelling out the growing-out area.
[Photos: Jono Waites & Dawn Worthington]



OPPORTUNITIES TO PARTICIPATE IN THE BARUNG COMMUNITY / DATE CLAIMERS!



Participating in Barung's activities is an excellent way to meet new people, get to know others you may see about town, and gain a stronger sense of community.

Here's a list of upcoming events where you might see Barung staff and volunteers in action - and where you might find something useful and satisfying to do too. So many opportunities, so many choices!

If you're interested in finding out about any of these activities, contact the Barung Office on **5494 3151** for more information and the best people to speak to.

- **Witta Markets (Blackall Range Growers' Market)** – Pop in for a chat with the many Barung members who gather around the Barung coffee cart and barbeque, or join the roster of volunteers supporting this Barung fundraiser – every third Saturday of the month (18th June, 16th July, 20th August)
- **Montville Markets** – Check out the Barung plant stall and information stand attended by Barung volunteers – every second Saturday of the month (11th June, 9th July, 13th August)
- **Barung special events** – two coming up are the visioning workshop, to brainstorm ideas for Barung's presence on the Maleny Community Precinct (Wednesday 20th July, *see page 4 of this issue for details*), and Barung's 21st Birthday Dinner on Saturday 1st October.
- **Major community events and festivals**, where staff always appreciate a hand setting up and attending the information stall and serving coffee and refreshments from the coffee cart (*see Dawn's call on page 10*) – upcoming events that Barung will be attending include:
 - Sunshine Coast **World Environment Day Festival** at the University of the Sunshine Coast on 5th June
 - **Gardening on the Edge** (Maleny Garden Club) at the Maleny High School Activities Centre on the weekend of 11th and 12th June
 - **Queensland Garden Expo** at the Nambour Showgrounds from Friday 8th July to Sunday 10th July
- **Volunteer** each week at one of the **three Barung nurseries** – **Maleny** (page 10), **Caloundra** (page 14) and **Landsborough** (page 2) – or the Barung **Resource Centre** in Maleny, or put your name down to be contacted when specific needs arise
- Get your hands in the soil or onto some weeds on your own land, or get active in community groups supported by Barung members, such as by
 - lending a hand at **Russell Family Park** (page 12) in Montville
 - joining a Bushcare group, such as at **Little Yabba** (page 7) or the **Maleny Community Precinct** (page 11)
 - developing the **Community Gardens** at the **Maple Street Co-op** (the labyrinth garden fronting Bicentenary Lane) or the new Community Garden starting at the **Maleny Community Precinct**.



Representing Barung, selling plants and answering questions at regional environmental events.



Touring tree-planted properties with other volunteers from nursery and office.

Helping out or just hanging out at the Barung BBQ & coffee cart at the Blackall Range Growers Market.



Getting trees in the ground in good company.



CELEBRATING BARUNG'S PAST & BUILDING OUR FUTURE

PRESIDENT'S REPORT by Eric Anderson

At the last Maleny Community Precinct Advisory Group meeting, agreement was reached on the two main issues – lease boundaries for Barung, Golf and Sport and Rec, and the location of the Trails – and signed off by the Advisory Group. As in all compromises everyone feels they have lost something but it is time to move on and start making things happen.

INVITATION to help PLAN

Now that we know our potential lease area on the precinct we would like to invite our membership to a workshop on Wednesday 20th July to contribute ideas on what we could do at the site. Currently we envisage an Educational/ Resource Centre, a retail rainforest nursery, a community garden and native plant demonstration gardens/ plantings. The workshop will be preceded by an inspection at 4 pm of our site on the Precinct, followed by the workshop at 5 pm. Contact the Barung Office on 5494 3151 to register your interest in attending.



Barung's BIRTHDAY PARTY

Another date claimer is our planned 21st Birthday Party on Saturday 1st October at the Community Centre – mark it in your calendars. Apart from enjoying a gala dinner and entertainment we plan to launch the fund-raising for the proposed Education/ Resource Centre at the Precinct.



Donations sought for Landsborough

The new native plant production nursery at Landsborough is taking shape. We recently hosted a visit to the site by Councillors Anna Grosskreutz and Jenny McKay, who are looking at ways they can help. We need to raise in the order of \$50 000 to establish the nursery and donations to Barung's Environment Gift Fund will greatly assist us.

Some valuable early assistance has been received in the form of \$25 000 being provided as an interest free loan. If you are interested in assisting with a loan (rather than a donation) please contact our Treasurer, David Binstead, or our Manager, Darryl Ebenezer.

When the nursery is up and running we will organise an 'opening' and invite members to inspect the site.

Maleny Wood Expo 2011

I have taken two months off to follow up some activities in Western Australia which includes exploring the highly biodiverse areas of the south west of WA, attending the Birds Australia AGM and Conference in Perth, and looking for the elusive Princess Parrot along the Canning Stock Route. While I'm away Pat Fuller will deputise for me as President while Glen Donoghoe will be my proxy at the monthly Maleny Community Precinct Advisory Group meetings.

I hope the Expo was an enjoyable experience for all who attended, that the weather was kind. The money earned at the Expo makes a significant contribution towards maintaining Barung's core operations as a community group. Many thanks to the Barung staff and the innumerable volunteers who have organised this event and helped run it.

End of Financial Year OPPORTUNITY

Please help Barung Landcare to establish our new Native Plant Nursery at Landsborough by donating to Barung's Environmental Gift Fund. All donations over \$2 are fully tax deductible.

Donations can be made via the Barung website or by cheque, credit card or direct deposit.

Contact the Barung Office on 5494 3151
or David Binstead on 5494 3677
for more information.



Glen Mulholland
(Green Army),
Cr Jenny McKay
(SCC Division 5),
Eric Anderson
(Barung President),
Neal Rolley
(Barung apprentice),
Darryl Ebenezer
(Barung Manager),
Cr Anna Grosskreutz,
(SCC Division 1),
Ian Krosch
(Barung apprentice)
and Oskar Cafarella
(Barung apprentice)
on a tour of the
developing facilities
at Barung's new
Landsborough Native
Plant Nursery.

LUMINOUS FUNGI

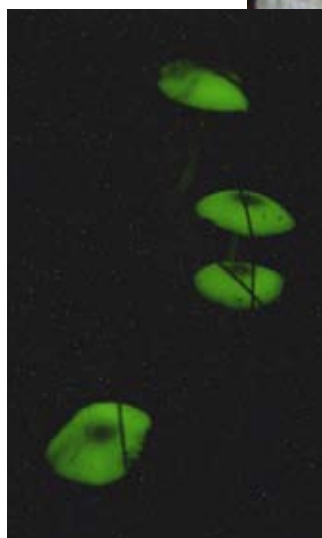
FUNGAL FORAY by Gretchen Evans

During the wet months of later summer several people mentioned to me that they had seen luminous fungi on their properties. Then a friend invited me round in late February to see her crop of fungi glowing green at the bottom of her stairs. It was a most spectacular show of fungi growing on a log of an old leopard tree. Previous sightings of luminous fungi had seemed mere pinpoint of light.

These fungi belong to the *Mycena* group, or what are sometimes referred to as bonnet fungi. These particular specimens looked like tiny mushrooms with gills and a cap diameter of just over 1 cm. Under torchlight they were creamy white with a dark area in the middle of the cap and had a sticky gel type of covering.

There are possibly five species of *Mycena* which glow in the dark and they are mainly to be found from December to March. There are more than 200 species of *Mycena* in Australia but the majority are not luminous.

I have also seen a much larger (20 cm) funnel-shaped luminous fungus up at Lamington which also glows green and is called *Omphalotus nidiformis*.



Mycena spp. fungi by torchlight (right) and luminescing green in the dark (above).

[Photos by Fran Guard]



MYRTLE RUST

THE ORNAMENTAL GARDEN by Joan Dillon

Much has already been said about this latest disease to afflict our gardens and it is definitely worth visiting the Biosecurity Queensland website www.biosecurity.qld.gov.au for updates and photos.

The website will tell you which plants are currently most affected, any currently available control measures and what home gardeners can do to at least try to slow the spread of the disease. Barung has copies of a fact sheet or you can download it yourself.

It is a notifiable disease so new outbreaks must be reported. Call 13 25 23 or the Exotic Plant Pest Hotline on 1800 084 881. The only effective way its progress can be tracked is for members of the public to report suspected outbreaks. This also of course helps to determine which species are most affected and this information will help all of us to plan our future gardens. We may choose to completely avoid certain plants.

At the moment we do not know the full breadth of severely affected species and it is up to all of us to take an interest in and monitor our own plants. I first spotted it on rose apple, an introduced minor fruit tree, and that will be removed with us taking as much care as possible.

Myrtle Rust spores, which can survive for up to 3 months in the environment, are wind dispersed and more likely to infect plants in wet humid conditions.

Myrtle rust attacks young, soft, actively growing leaves, shoot tips and young stems. It is worth removing the infected growth,

securely bagging the pieces in black plastic and leaving the bag(s) in the sun for 3 to 4 weeks. (We can presume the sun will shine eventually.) Otherwise dispose of the sealed bags in the general waste; obviously not in the green waste. The Biosecurity website provides further information on disposal. Make sure also that tools such as secateurs are thoroughly cleaned after use. Safe removal of infected plant material, wherever possible, should help to slow the spread of the disease.

Since many of our garden shrubs belong to the Myrtaceae family, I don't doubt we will continue to plant them whilst getting advice on those species and varieties to avoid for the time being. My personal feeling is that planting for maximum diversity will be of most benefit in the long run. I have not yet seen it on my 'Blushing Beauty' but the shrubs are located amongst other non-susceptible species. Hopefully this is slowing the spread of spores. The disease is here to stay and we'll all have to learn how to manage it and limit the damage as much as possible.

Since the disease can spread through the movement of infected or contaminated plant material, don't move plants off an infected site. Become familiar with the disease and check anything coming onto your property. Recognised nurseries should be clean.

In future plantings I will look for alternatives to badly affected local species. The Barung nursery staff can help with this information. It's a learning process.



Myrtle Rust damage.

[Photo courtesy of Jacinda Chisholm, Biosecurity Qld]

WOOD EXPO jinxes rain

... Continued from page 1



Well done to Steve and all of the team: to Jono Waites for organising the volunteers; to Jackie Montgomery for running the raffle; to the Barung crew who worked so hard during set-up and pull-down; to Michael Howard for the Landcare BBQ and John and Mary King for managing the Landcare Bar and sharing their delicious rainforest liqueurs; to Cilla Rose and June Hammond for undertaking Volunteer Registrations for yet another year; and to Mathew Babarovich from the Barung Green Army team for coordinating the parking under very muddy conditions.

Thanks to all exhibitors – our woodworkers and millers, Taste Maleny Produce, Sustainable Living, Natural Resource Management and others – without you there is no Expo.

Thanks to Sunshine Coast Council, Maleny IGA, South East Queensland Catchments and Burnett Mary Regional Group for their sponsorship and the Great South East for their television campaign.

Thanks to Karen Barnett and Montville Coffee who donate \$2 from every cup of coffee sold to Barung's Landcare education program; all local businesses who support the event in a variety of ways,

including The Hinterland Times and The Range News; Ivan Hankinson and Col Sinclair for their never-ending support; SES volunteers for street parking; Maleny Community Gym for vacating their premises; and our local catering teams: the Maleny Lions, the River School, the Maleny Community Centre and Maleny High School P&C – all of whom donate a portion of profits back to Landcare.



Enabling other groups to benefit from the fundraising opportunity is part of the Expo's charter and Barung is delighted to be able to support our local community in this way.

But again the biggest thanks go to Steve McLeish for his dedicated attention to detail and pulling the show together.



Thank you to Steve Swayne for the photos that appear on pages 1, 6 and 10.



Sunshine Coast
Council



MALENY WOOD EXPO 2011

*from chainsaw
to fine furniture*

EXPO SPONSORS

Sunshine Coast Regional Council

Maleny Super IGA

SEQ Catchments

Montville Coffee

Perry's Party Hire

Ritek Building Solutions

RAFFLE SPONSORS

Richard Knight

Bamboo Retreat

Maleny Mowers

Blessed Earth

The Maple St Coop

Maleny Jewellers

The Reserve Restaurant

Michelle Pike

Reid Pottery

Elaine Green

EXPO SUPPORTERS

Ananda Marga River School

Bandprint

Maleny Beechwood Bakehouse

Burnett Mary Regional Group

Great South East

Fig Jam Woodworks

Hinterland Laundry

Hinterland Times

Lions Club of Maleny

Log Dog Enterprises

Maleny Cheese

Maleny Bakery Cafe

Maleny Community Centre

Maleny Mountain Wines

Maleny Show Society

Maleny State High School

Maple 3 Cafe

Mary Cairncross Cafe

Milex Golf Buggies

Montville Mist

Rosetta Books

Suncoast Brochure Distributors

Sunergy Solutions

Tanunda Cellars

The Range News

Top of the Range Meats

The UpFront Club

BUSHCARE GROUP SET TO GO IN THE MARY VALLEY

HINTERLAND BUSH LINKS by Susie Duncan

Hinterland Bush Links has set up a Bushcare group in the Mary Valley with the help of Sunshine Coast Council. The group will focus on revegetation and weed management at Little Yabba Park at Cambrook. This will be an important contribution toward restoring a key flora and fauna corridor between the Blackall and Conondale ranges.

Council will support the Bushcare group by providing management advice, tools, plant stock and some weed management. The group plans to revegetate the banks of Little Yabba Creek and the Mary River to protect the integrity of these streams. The plantings will also provide habitat for fruit-eating birds and flying foxes, butterflies such as the rare Richmond Birdwing, mammals, reptiles and frogs. Queensland National Parks has expressed initial interest in continuing this work at their office base a short distance upstream on Little Yabba Creek.

We often think of corridors as narrow strips of vegetation along which animals move. This may be the case for mobile species such as fruit-doves and the seeds that they disperse. But for less mobile species it is important that the corridors are broad stretches of really good habitat so that they can live there and disperse into new areas over several generations. Restoring vegetation at Little Yabba Park and in the surrounding landscape will assist species that will not readily cross cleared land. The linkage means that the extensive forests of the Conondales will connect with the substantial blocks of forest in the Blackall Range, providing much more habitat for all species. Fruit-eating wildlife will benefit from the range of fruiting times between the lower and higher altitude forests extending across these ranges. And with the potential advent of higher temperatures due to climate change, there is more opportunity for species to move to higher altitudes and moister pockets whilst adapting to these changes.

Hinterland Bush Links continues to work with landholders who are interested in restoring habitat in key corridors. The current focus is the corridor described above with further linkages between the Walli, Kidaman Creek and Kondalilla sections of Maleny National Park on the Blackall Range. Beyond Kondalilla there are potential connections to Mapleton Forest Reserve to the north and the Mooloolah Valley to the south-east. Currently there is some interest in the Hunchy area to connect remnant vegetation between Kondalilla and Woombye. And of course the Mary River itself is a significant corridor that will benefit from weed management and revegetation particularly in areas prone to erosion. This will all take time and in some cases there may never be continuous vegetation but rather stepping stones of bush that will assist the dispersal of fauna and flora.

If you are interested in restoration work on your property in any of these corridors, or would like to support the project in any other way including joining the Little Yabba Park Bushcare Group, please contact Susie Duncan on 5429 6622 or wilderness@hotmail.net.au



*Looking south up the Mary Valley from Imbil State Forest. The planned vegetation corridor will link the Conondale Range (in the foreground and right of photo) to the Blackall Range across the Mary River (on the left of photo).
[Photo by Nick Clancy]*



Walks with Barung Landcare supporters

Sunday 21 August: Russell Family Park, Montville. **Diana O'Connor** and **Eric Anderson** will be leading guided walks through the Russell Family Park revegetation project.

Friday 26 August 2011: Conondale National Park. **Susie Duncan** will lead a 10 km walk on tracks into the upper catchment of Summer Creek. Rainforest, cascades, waterfalls & wildlife. Moderate to steep grades.

Please book walks through the Sunshine Coast Walks Festival website:

www.festivalofthewalks.com.au

**Keep an eye on the Barung website
for upcoming events
and new features:**

www.barunglandcare.org.au

Carex brunnea

GREATER BROWN SEDGE

Family: Cyperaceae

PLANT PROFILE by Wayne Webb

Carex brunnea is a graceful, densely tufted sedge with fine weeping bright green foliage. While many species of *Carex* are associated with wetlands and waterways, this species is found in rainforest and adjoining wet sclerophyll forest along the east coast of Australia, northwards from Clyde Mountain in south-eastern New South Wales. It favours spots on the forest floor where it receives filtered light through breaks in the tree canopy, and is often seen along tracks when bushwalking through rainforest.

Ideally suited to a shaded rainforest garden, *Carex brunnea* looks beautiful around garden ponds where it provides habitat for small frogs. It blends well with small ferns, such as *Adiantum hispidulum* (Rough Maiden Hair), and looks great around rocks and mossy logs.

Carex brunnea is a larval food plant for the Spotted Sedge-Skipper butterfly.

Carex brunnea is widely distributed from northeast tropical Africa, the western Indian Ocean, through subtropical Asia, Hawaii, eastern Australia and Lord Howe Island. A number of subspecies have been recognised, with the Australian being *Carex brunnea ssp. brunnea*. Named varieties are available through the nursery trade and include a variegated variety.

The local form stocked by the Barung nursery appears to be smaller, finer and more graceful than other forms seen in south-east Queensland.



Carex brunnea with other forest understorey plants at Barung's Maleny Nursery. [Photo: Wayne Webb]

It grows to a height of around 50 cm. Flowering stems reach a length of 80 cm, and as these arch outwards the plant may reach a total spread of 1.5 m. Flowering spikes are green, turning brown, to 3 cm long. A number of spikes are carried towards the top of each flowering stem, or culm. The upper spikes are predominately male, while the lower spikes are predominately female and therefore seed-bearing when mature.

Seed may be collected by simply running your hand through the mature flower heads. Ripe seeds will come off in your hands and can be scattered over the top of a seed tray and lightly watered in. Keep moist in a shaded spot. Seedlings can be transplanted when big enough to handle. Clumps may also be divided.



THANK YOU TO MALENY IGA

and you, Barung Members, too!

Thank you to Rob and Sam Outridge of the Maleny Supa IGA for their further donation of \$5000 from the Community Benefit Fund to support Barung Landcare. These funds were put toward tractor tools, a quad bike, and sponsorship for the Maleny Wood Expo.

Thanks to everyone who supports Barung Landcare through this program. Just by nominating Barung as your CBC group and shopping at Maleny Supa IGA, you are contributing toward our funding.

If you haven't yet done so, please nominate Barung Landcare to receive your points under the Supa IGA Community Benefit Fund.

Barung's CBC number is 20943.

HOLLOW LOG HOMES

for sale at Barung

Small parrot
Small bat
Glider
Possum



WOOTHA PRIZE 2011 WINNERS

by *Mim Coulstock*

The 2011 Expo launched on Friday night with guests and exhibitors mingling over wine and nibbles in the Main Pavilion. Guests were welcomed by MC Steven Lang and Welcomed to Country by Bev Hand, and then the Expo was officially opened by Ashley Sewell whose brainchild the original Expo was in 1996 – very fitting for the 15th event.

This was followed by the announcement of the Wootha Prize winners. This prize, previously offered in 2004, 2005 and 2006, returned this year to again form the feature exhibition on the stage of the Main Pavilion.

For the first time the Wootha Prize went to a woman when the three judges decided unanimously to give Sandra Skodnik from Clontarf the \$1000 first place prize. The spiral form of her superbly crafted 'Nature's Design' – inspired by a time and water-worn mud whelk shell – was hand carved from camphor laurel with the textured outer surface contrasting with the highly polished colour of the spiral's interior.

Second place went to Radha Pederson, Eagleby, for his sculpture 'Our Family'. Carved from salvaged Rosewood, the 'totem-like' piece depicts a family of turtles. Broc Cattley of Mooloolah won third prize with his beautifully crafted 'Serenity Cabinet', constructed from recycled Ironbark, Tallwood and Tassie Oak.

The Craftmanship Award was presented to local sculptor Jack Wilms for his red cedar sculpture 'Lasseter's Lost Reef' depicting the mystery and legend of the gold reef and Lasseter's fatal final journey to discover it. Michael Dooley from Kenmore was awarded the Design Excellence Award for his stand-out contemporary entry, 'Corner Clothes Rack', designed to convert an unused corner into a functional attractive space.

Thank you to sponsors Barung Landcare and Ritek Building Solutions of Cooroy, long-time promoters and innovators of sustainable building practices. Thank you to Juanita Anderson, representing Ritek Building Solutions, and the judging panel of Norman Richards (architect), John Whan (retired master woodworker) and Ashley Sewell (timber expert and woodworker).

Sandra Skodnik (below), winner of 2011 Wootha Prize, with judges Norman Richards, Ashley Sewell and John Whan. Second Prize went to Radha Pederson (right) for his sculpture 'Our Family'.

[Photos by Mim Coulstock]



Many thanks to: Steven Lang for officiating at the opening; Bev Hand for once again stirring our hearts with her 'Welcome to Country'; Boris Daniljenko who carved the superb new 'Wootha Prize' sign; Chris Buhle for donating the sign timber; Ken Munsie for helping arrange the exhibition; and David Linton Furniture and Timber Works for exhibiting most of the pieces for a further two weeks.

The theme for the 2012 Wootha Prize is 'One Door'. Application forms will be available soon from Barung and online.

UPPER MOOLOOLAH LANDSLIP HELP + Green Army Team

In the upper Mooloolah catchment funds are available to assist farmers in addressing landslips improving waterway conditions as part of their overall farm management.

This project is part of a larger joint initiative, Suncoast FarmFLOW, through which Maroochy Landcare Group has been granted \$789 000 over three years by the Australian Government's Caring for Our Country program to deliver support, incentives and training to landholders in the upper Mooloolah, North Maroochy and Kin Kin catchments and the Maroochy canelands. The project will be delivered across the region in partnership with local government, Landcare, Waterwatch and traditional owner groups – and Barung Landcare is the partner in the upper Mooloolah area.

The three-year projects will work on stream bank stabilisation, landslip rehabilitation and wetland linkage enhancement as part of a broader agricultural support program.

Rural landholders in all three target catchments may be eligible to access advice and incentive funding to assist them on-farm with rehabilitating and revegetating waterways and wetlands, rehabilitating landslips and erosion sites, and/or implementing

farming best management practices such as fencing and nutrient application. Training events and field days will be held across the region to enable landholders to share their knowledge and experiences of land management.

Barung will also be managing Green Army teams supporting landholders in the Upper Mooloolah over 30 weeks starting 14th June, when the first team will be starting under the leadership of Kate Brooks.

In all, eight Green Army participants (2 intakes of 4) will gain experience in assessing waterway erosion; determining good land management practices to repair and resolve erosion issues; revegetation; weed identification and removal. Participants will also become skilled in water testing and monitoring. Green Army Participants will learn about appropriate native plant rehabilitation practices, and will get exposure to working in nurseries.

Landholders interested in finding out more should contact Barung Landcare on 5494 3151 if in the upper Mooloolah catchment, or Ian McConnel (FarmFLOW Project Coordinator) on 0407 168 995 or ian.mcconnel@deedi.qld.gov.au if in one of the other catchments mentioned.

EXPO A BEAUTY!

NURSERY NOTES by Dawn Worthington

Very special thanks must go to everyone who helped us to be ready for the Maleny Wood Expo 2011. Under dark skies we continued preparing plants, tags, posters, signage and so forth. Many people do not realise the effort required before, during and after such an event – it does take weeks and weeks of planning! Thank goodness the sun shone – it seems that all the sun-dancing we did at the nursery in the previous few weeks must have had an effect!

We had a good number of people through the tent over the two days; many said they did not realise we stock such a large range of plants and or that the species are all indigenous to the local area to boot! There was much discussion about Myrtle Rust and the ramifications it may or may not have for our environment; many people are quite concerned about its overall impact and rightly so, I think.

We had the SCC (Sunshine Coast Council) Land for Wildlife / Conservation Partnerships Officers, Nick Clancy and Alan Wynn, with us at our tent during the Wood Expo. A lot of people were able to talk to them about the parameters of gaining assistance through the Council and this, in turn, makes it easier for us to know how to help these landholders! The SCC display was about the endangered fauna species of our region which went across really well.

Again, Wayne and I would like to extend our heartfelt thanks to all of those who assisted in all aspects of the Nursery Tent. A special thank you goes to Ian Webster and Dianne Lanskey, who assisted us for the first time this year, both capably filling the shoes of Eric Anderson and Diana O'Connor who were unable to attend this year's event due to other commitments. It can be rather daunting to speak to members of the public about plants and both Ian and Dianne acquitted themselves really well.

Help to represent Barung

On that note, is there anyone out in membership land who would like to assist Wayne and myself with attending events in the coming weeks? The 'event season' is fast looming and we can only do so much... The events are listed on page 3 of this issue.

Attending the Barung stall is normally a very interesting day out, very informative, and you meet the nicest of people.

So please call us if you are interested in lending us a hand. Our direct phone number is 0429 943 152, and it is probably best to call us directly rather than the Barung Office as we will be organising and timetabling the volunteers for these events through the Nursery. Many thanks.

Other news

During these last couple of months we have said a sad farewell to two members of our volunteer force who have retired. Brian Germein has been with us for a number of years, always assisting with the many projects we have been involved in. Brian has spent many early mornings at Witta Markets helping us to set up and pull down the tents and coffee cart and so forth. Deanne Grace has also moved on. Deanne always assisted with the plants out on sale in the Farm Gate area at the Maleny Nursery, and her efforts will be sorely missed. They both helped Wayne and me set up the site at Porters Lane, which was a mammoth job.

Thanks to both of you for all your efforts over the years at Barung Landcare. We and the other vollies will miss your smiling faces and we look forward to seeing you on the occasional visit.

Time to visit the Nursery

Our stock at the Porters Lane Nursery is looking great. The diversity of stock has increased now that we are receiving varieties from our George Street Nursery. So come on in and have a look! We have a great selection of bird and butterfly attracting species so you can do your bit for species diversity on the Range.



Kate Brooks and Wayne Webb fielding enquiries at the Nursery Tent at the Maleny Wood Expo 2011.

[Photo: Steve Swayne]

THANK YOU TO ...

- ... **Ben Humphreys** for the use of your car and phone, the supply of O rings, and dropping materials off at Woodford
- ... **Matt Babarovich** for use of your car to deliver plants for display at Andrew Powell's office on several occasions
- ... **Wayne Webb** for collecting plants from Coolum
- ... **Cheryl Underwood** for bringing in card-cutting equipment for the name tags
- ... **Noel Law**, foam box and coffee supply king
- ... **Clare Sluggett, Ruth Blanch** and **Jenny Checker** for making goodies for farewelling the retiring vollies
- ... **Pamela Owens** for your cakes and thoughts!
- ... **Alan Bannister**, weekly bun loaf supplier extraordinaire!
- ... **Helen Lavery**, the orange/poppy seed cake lady

For Expo help ...

- ... **Ruth Blanch, Jenny Checker, Joan Dillon, John Dillon, Fran Guard, Rebecca Hall, Craig Hosmer, Dianne Lanskey, Bob Philpot, Daryl Reinke, Clare Sluggett, Kerry Sluggett, Janet Webb** and **Ian Webster** for assisting in the Nursery tent
- ... **Deanne Grace, Jenny Checker** and **Clare Sluggett** for packing the nursery plants and cleaning up
- ... **Kerry Sluggett, Bob Vigar** and **Doug Blanch** for transporting plants and hay and helping with the clean up
- ... **Rebecca Hall** for waitressing at the Friday night dinner
- ... **Pam Watson** for compiling the books and materials

For seeds ...

- ... **Terry Boyle, Paul Prociw, Rowena Thomas** and **Garry Broadhurst** for *Araucaria bidwillii*
- ... **Diana O'Connor** for all your seed collecting efforts
- ... **Matthew Bateman**, the man who spends all his walking moments looking for seed!
- ... **and all the other people that we have been remiss in mentioning, apologies to you, and thank you.**

LARGE-BILLED SCRUBWREN

RAINFOREST BIRDS by Eric Anderson

The Large-billed Scrubwren is a medium-sized, 12 to 13 cm long, arboreal scrubwren with a rather short tail and long dagger-like bill that typically appears uptilted. The sexes look alike. Adult birds are mostly brownish-olive above and paler buff-olive below. They have a large dark eye, which stands out prominently in a rather bland open pale buff-olive face. The bill is black and the iris dark red (appearing blackish except in very close views). The legs and feet are flesh-pink or greyish pink. The juvenile differs only subtly from the adult.

At first glance the Large-billed Scrubwren could be confused with thornbills, especially the Brown Thornbill, but differs in having much paler pinkish legs and feet (blackish in thornbills) and other obvious differences such as the bill and having a plain warm-buff face and unstreaked chin, throat and breast.

It is a gregarious bird usually seen in small foraging parties of three to five birds, but occasionally singly or in pairs. Large-billed scrubwrens often join mixed-species feeding flocks that include fantails, shrike-thrushes, gerygones and other species.

While moving through the forest foraging, large-billed scrubwrens can be rather noisy, uttering a continual sharp chattering *sip-sip-sip* or a soft twittering and chattering while feeding. However sharp alarm notes may be emitted when the birds are disturbed.

They are mostly insectivorous, although they also take spiders and occasionally snails. They forage mainly in the lower and middle levels of forest, often beginning low down and working upward through the foliage and along vines and branches, often clinging vertically or hanging acrobatically while gleaning insects off the substrate.

Large-billed Scrubwrens are endemic to east and south-east Australia from Cooktown to Melbourne. They are found mainly in



Large-billed Scrubwren.

[Photo: Eric Anderson]

rainforests and wet sclerophyll forests in tropical, subtropical and temperate zones and occur from coastal lowlands to the slopes, ridges and tablelands of the Great Divide.

Large-billed Scrubwrens are known to breed from July to January, but their season is most likely October to December in this region.

In south-east Queensland their nests have rarely been found as they usually appropriate the nests of other species, especially those of Yellow-throated Scrubwrens and sometimes Brown Gerygones. Most often they take over nests that are old and disused, although they do also usurp freshly-built nests. They lay two to five (usually three), 19 by 14 mm, oval-shaped eggs that are white with small dark-brown or purplish-brown freckles or streaks, or, rarely, blotches. Both adults attend to nestlings.

PRECINCT BUSHCARE GROUP - *New members welcome*

by Tracy Adams

A community Bushcare group has formed to do revegetation and reveg maintenance on the Maleny Community Precinct. Our current work consists of weeding and infill planting and future working bees will include new riparian plantings. We are also caring for the Jill Jordan Grove planted by the creek in October last year. The Bushcare group is auspiced by the Sunshine Coast Council in conjunction with the Maleny Green Hills Association. All work is carried out according to Council work plans.

This reveg on the Precinct is part of a wider effort to create, improve and maintain landscape and regional scale ecological functioning and species viability in the long term. By adding our bit to establishing a vital network of native vegetation and wildlife corridors and linked patches of native bushland, we can support the long term survival of native species and ecosystems in the face of climate change, population growth and other challenges to our native ecology. The Precinct Bushcare work is also helping to create a magnificent feature for future residents and visitors to enjoy.

Tools and gloves are provided, or you may bring your own. Bring water bottle, closed in shoes and hat. Morning tea and discussion are provided afterwards at the Barung Nursery. **Check the Green Hills website for any changes to times or dates.**

The Precinct Bushcare working bees are held from 9 - 11 am on the third Sunday of each month during winter (8 - 10 am in warmer months). Meet at 9 am outside Barung Landcare Nursery on Porters Lane to sign in for each working bee.



Helping out on a sunny winter's day with the Maleny Community Precinct Bushcare Group.

[Photo: Kathy Earsman]

Register online at the Green Hills website: www.greenhills.org.au

Enquiries to Tracy Adams on wildweaver@ozemail.com.au or 5435 2993 or to Sammy Ringer on 0410 833 981.

HEARTY PROGRESS OVER TIME

RUSSELL FAMILY PARK by Diana O'Connor

It was in the wet March of 2008 that the Rainforest Revegetation Project began in Montville's lovely Russell Family Park. Council had a progress plan and only needed some passion from the community to kick-start the action.

This park is situated behind Montville village's western row of shops and readily accessed through the large off-road carpark behind the Information Centre and from between some of the shops. Besides the revegetation areas, the park features lagoons, seating, and two playgrounds with challenging play equipment including a flying fox.

After delays caused by rain – a now very familiar aspect of our lives – Council had the first lot of weed trees removed and the community group began planting. Since then, only twice have we had to carry buckets of water from the billabongs to keep the small trees alive during bouts of dry weather. Even last year's School Planting with Montville Primary on National Tree Day at the end of July, during what is considered the DRY season, has progressed well. In fact our biggest problem has been having to shovel up and return barrow-loads of soil and mulch that had washed out of the reveg areas and onto paths during several heavy rain events.

Weed growth has been nothing short of amazing this season, as most of you will know; when you provide perfect conditions with a lovely layer of paper and mulch you can grow prize-sized specimens! Unfortunately, Blue-top, also known as Billygoat weed *Ageratum* sp. (originally from South America) has colonised the area; in a season as wet as this the plants root along the stems where they rest on the soil, creating a strong web of matter that is hard work to remove. As well, we have taken out about a thousand seedling Privets and Camphor Laurels which had grown from the residual seed bed or seed brought in by birds.

However the conditions that have favoured weeds have also been great for the trees and we are heartened by the progress they have made. We expect it to be another three years before the canopy is closed enough to keep weeds down in the core of the planting. We have found the Native Elderberry *Sambucus australasica* to be a very useful early edge plant, growing rapidly to 2 metres and screening the edge efficiently.



Russell Family Park after the weed trees were removed early on (above), and showing progress to date (below). [Photos by Diana O'Connor]



Your support will be warmly welcomed

Our group would really benefit from having more participants, so if you would like to experience the satisfaction of helping to create a new forest, consider joining us for an hour and a half a month or each week or in between, as you like.

Montville locality residents are particularly encouraged to become involved.

Six regular volunteers make up our core group. In the last year we have been much encouraged by the support of the Maleny Lions who join us regularly to help us tackle big jobs such as mulching large areas.

In winter we meet at 8 am and work till 9.30 before sharing a cuppa and cake. Working bees are on the 1st and 3rd Sundays of the month and the 2nd and 4th Tuesdays. For more information contact Diana O'Connor on 5445 7065.

Walks Festival opportunity

As one of the many family-friendly activities taking place in the park during Montville Walks Day on Sunday 21st August, Diana O'Connor and Eric Anderson will be leading guided walks through the Russell Family Park revegetation project.

More info:

www.festivalofthewalks.com.au

THANKS TO THE MALENY WOOD EXPO VOLUNTEERS!

by Amelia Ross

The 2011 Maleny Wood Expo was another success and it is time to say a huge THANK YOU to all our fantastic volunteers, with more than 170 volunteers registered across the weekend. We received a lot of positive feedback about how helpful and friendly all of the volunteers were. So thank you to all the Wood Expo volunteers, and a special thank you for the attention and time invested by the volunteer coordinators.

As Barung's primary fundraising opportunity for the year, we depend on the contribution of volunteers and will be anticipating and appreciating your help again when the 2012 Wood Expo is upon us.

Thank you all once again for your continuous enthusiasm and effort that you've invested in Barung. Please remember, WE COULDN'T HAVE DONE IT WITHOUT YOU!

Marion Adamson
Clarke Alexander
Lyn Alexander
Juanita Anderson
Liz Antcliff
Rob Antcliff
John Arias
Glenis Ayling
Matt Babarovich
Margo Balfour
Matt Bateman
Rita Beenders
Jan Bell
David Binstead
Doug Blanch
Ruth Blanch
Nancy Bogdanoff
Wyn Boon
Chris Braun
Rob Braun
Geoff Bridger
Kate Brooks
Dorothy Brown
Dianne Brown
Nat Brown
Peter Brown
Jay Bruckman
Georgia Buchli
Hanspeter Buchli
Richard Burton
Lenore Burton
Janet Carew
Jennifer Checker
Amy Clancy
Ode Claxton-Smith
Tui Cody
Mim Coulstock
Jim Cox
Samantha
Davey-Mitchell
Richard Dent
Joan Dillon
John Dillon
Bryan Dodwell
Jan Dodwell
Mary Donohue
Sam Duggan
Susie Duncan
Graham Earle
Jenny Earle
Ashleigh Ebenezer
Darryl Ebenezer

Kyle Ebenezer
Bill Egerton
Gretchen Evans
David Fairlie
Lin Fairlie
Michele
Felmingham
Alan Felmingham
Marnie Foote
Bernie Gallant
Alan Geritz
Brian Germein
Bonnie Gilbert
Gwenda Gills
Deanne Grace
Dennis Graham
Anthony Greenwood
Basil Grove
Fran Guard
Rebecca Hall
June Hammond
Pamela Hand
Peter Harris
Petrus Heyligers
Ron Hilton
Mary Hilton
Kim Hinckfuss
Robyn Hofmeyr
Shakti Hollard
Craig Hosmer
Michael Howard

Ben Humphrey
Linda Ivezec
Gordon Jones
Robyn Jones
John Kene
Rodney Kerr
Irene Keton
Helen Killeen
John King
Mary King
Dianne Lanskey
Tina Lathouras
Jim Laundy
Annette Lawniczack
George Lawniczack
Tracy Lewis
Pam Maegdefrau
Libby Malter
Marek Malter
Jo Marsh
Margarete May
Edward McCosker
Jessica McCosker
Rebecca McCosker
David McKinnie
Kristen McKinnie
John Mead
Mary Meadows
Craig Miller
Linda Miller
Peter Milton

Jacqui Montgomery
Anna Morningstar
Peter Morningstar
Jill Morris
Jim Morris
John Muir
Glenn Mulholland
Dick Newman
Mark Newman
Mike Parr
Paddy Parr
Judy Paulson
Gillian Peachey
Bob Philpot
Eunice Prickett
Ted Prickett
Daryl Reinke
Sammy Ringer
Penny Rogan
Monica Rogers
Cilla Rose
Amelia Ross
Brian Ross
Vicki Shuley
John Sinclair
Sue Sinclair
Clare Sluggett
Kerry Sluggett
Bridget Sparkes
Rachel Stacy
Claire Staines

Fiona Stevens
Bill Sunter
Rosaline Sunter
Steve Swayne
Luke Symons
Sue Tanner
Bob Taylor
Lindsay Thomas
Jane Todd
Rosemary Twidle
Connie Vigar
Robert Vigar
Jonathan Waites
Pam Watson
Pat Weaver
Vic Weaver
Janet Webb
Jessica Webb
Wayne Webb
Ian Webster
Eddie Weir
Carolyn Willadsen
Peter Willadsen
Laurel Wilson
Eve Witney
Amber Worthington
Dawn Worthington
Roy Worthington
Zach Worthington
Brigitte Zantner



GEORGE STREET... THE COMMUNITY'S NURSERY

GEORGE ST NURSERY NEWS by Kate Brooks

Whilst running around in the Barung Nursery tent at the Maleny Wood Expo, I made a few new friends. One lovely lady, Jude Crighton, is a member of the Friends of Ben Bennett Bushland Park, which is only a short stroll from our nursery in Caloundra. I was invited to attend their monthly meeting and was very pleased to find out there was a community group operating within the Park – and they too were just as excited to hear about our nursery.

Ben Bennett Bushland Park is located in Queen Street in Caloundra next to Caloundra High School. Initially just 5 hectares were set aside for the park in 1969 but this has been expanded to 21.5 hectares over the years. Ben Bennett is a truly impressive park as it showcases an array of ecosystems that would have once been common along the coast including heath, Melaleuca wetlands, Eucalyptus forest and lowland rainforest.



One of the locals... *Drosera spatulata*.
[Photo by Kate Brooks]

The Friends of Ben Bennett Bushland Park are a wonderful group of extremely dedicated people who are just as passionate about the Park as they are about many other local issues. They are strongly supported by the staff of Sunshine Coast Council who maintain the Park's facilities and are currently upgrading signage and walking tracks.

During the meeting we spoke about helping one another out by utilising both groups' strengths to combat some of our weaknesses. Coupled with the current support from Council, we at Barung can contribute to the Park's continued success by helping with plant and weed identification and providing labour to help with removing weeds. From this we can gain another source of local seed and hands-on training for people at the nursery as well as some more enthusiastic volunteers.

This project has given us a great amount of joy in the nursery and we look forward to maintaining a strong working relationship with such a committed group of volunteers.

BARUNG RESOURCE CENTRE

Shop 3, Riverside Centre, Maleny

MON to THURS 9 am - 4 pm

5494 3151

info@barunglandcare.org.au

BARUNG NURSERIES

at Landsborough, Maleny & Caloundra

07 5439 9879

nursery@barunglandcare.org.au

Landsborough Nursery

135 Forestry Road, Landsborough

Under Construction: Opening July 2011

Maleny Nursery

Porters Lane, North Maleny

WED to FRI: 9 am - 3 pm

George St Community Nursery

9 George Street, Caloundra

Check Barung website for opening hours

SUCCESSFUL GRANT APPLICATIONS

The latest round of grants from the Gambling Community Benefit Fund (GCBF) has finally been announced and Barung has been successful with two applications. Both of these grants will allow Barung to continue setting an environmental example for the community, utilising solar energy and an eco-friendly vehicle.

Under the Solar Sport and Community Group Grant scheme, Barung will be receiving a grant for a solar hot water system (\$4300) which will be installed on the roof at the new Landsborough Native Plant Nursery site. This will be great addition to the existing solar power system.

The second grant, also from the GCBF, is nearly \$20 000 to purchase an economical and environmentally friendly Ford Fiesta Diesel. This car will enable Barung staff and volunteers to continue participating in community and educational events.

THANK YOU to **Mim Coulstock** and **Amelia Ross** for your energy in writing these grant applications.

Barung Contracting Services



Barung
LANDCARE
WORKING FOR OUR FUTURE

revegetation
bush regeneration
landscape rehabilitation
environmental weed control
project planning & management
indigenous tubestock
consultancy & property planning
onground conservation works

contracting services 0429 943 156
barung landcare 07 5494 3151
contracting@barunglandcare.org.au
www.barunglandcare.org.au

MICROBAT ROOSTING PLACES: *Can you help us locate them?*

by Rachel Lyons, Planning & Biodiversity Coordinator
Burnett Mary Regional Group for NRM Inc

Caves, tunnels, mines, drains...

We know relatively little about the amazing little insect-eating machines called microbats, of which there are more than 60 species in Australia, representing about 20% of all our mammal species. Eleven species of microbats in the SEQ Bioregion and Eastern Brigalow Belt use caves or cave-like structures as roosts for a variety of reasons, including maternity roosts. Several of these species are listed as Vulnerable or Endangered under the various Acts.

Over the next couple of months, SEQ Catchments and Burnett Mary Regional Group are considering undertaking a survey of important microbat caves, mines, tunnels etc in our respective regional areas (from Gladstone down to the border and west to Toowoomba) and we need your help in locating them.

With the help of some amazing scientists including Dr Les Hall, we have an idea of where many are but there are many more we don't know about, some possibly extremely important ones that may need some future recognition, protection or management works.

If you are aware of any significant microbat roosting structures in your neck of the woods we would love to hear about them – so that we can plan and work up the survey and make the most of the scientists' time.



Common Bentwing Bat.
[Photo by Les Hall]

Please let me know via email the following information as soon as you can:

- * Location (GPS coordinates, address or whatever you have)
- * Type of structure – cave, old railway tunnel, drain etc
- * Tenure of land and contact person (if you have these)
- * Access considerations (eg half hour walk in, hill climb, dry weather only, gated)
- * Any info you may have on current site usage by microbats.

Contact Rachel Lyons on 0429 462 040 or rachel.lyons@bmrg.org.au



CRITICAL CASSOWARY HABITAT IN THE DAINTREE PROTECTED FOREVER

Rainforest Rescue has purchased a 14th property incorporating World Heritage-value Daintree rainforest, extending their protection of critical Cassowary habitat by protecting the property from further development. The property and the surrounding area have been classified as essential habitat for the endangered Cassowary by the Queensland Government (under the *Vegetation Management Act of 1999*).

A vegetation survey by Allen Sheather and Barbara Maslen, Daintree residents, has confirmed the high conservation value of the new property. More than 100 plant species were recorded on the property, including several rare plants and Black Palms, which are significant food plants for the Cassowary during the food-scarce wet season. During the survey, they came across three reasonably fresh Cassowary droppings and several older droppings with germinating seeds.

Rainforest Rescue's *Daintree Buy Back and Protect Forever Project* is fully funded by the community, receiving donations from individuals and businesses in Australia and internationally. Approximately 180 properties remain at risk within the Daintree Lowlands rainforest. Rainforest Rescue is now seeking funds to purchase and protect its 15th Daintree property.

To make a tax-deductible donation, visit www.rainforestrescue.org.au, or phone 1300 763 611.

Kelvin Davies, CEO of Rainforest Rescue, can be contacted on (02) 6684 4360 or 0427 662 913.

Have you found your MEMBERS AREA on the Barung Website?

At www.barunglandcare.org.au, you can:

- * pay your membership
- * make a donation
- * update your details
- * register your interest in Barung activities

Log in with your email address or email info@barunglandcare.org.au for more info.

BARUNG WELCOMES...

New Members

Gus & Tracey Cladera
Kate Greenwood
Julia Macdonald-
Buchanan
Ross Smith
Vance Towner
Jim Waters

Rejoined Members

Gayle Johnson
David Lowry
Ranald Millar
Lyn Stevens & Roger Donovan
Bridget & Jervis Sparks
Carole Vardy
Bo & Suzanne Williams

PLANTS AVAILABLE

at the Barung Nurseries

Look for the current plant lists on the Barung Website under the NURSERY tab

www.barunglandcare.org.au



BOOK REVIEWS

FUNGI DOWN UNDER: The FUNGIMAP Guide to Australian Fungi

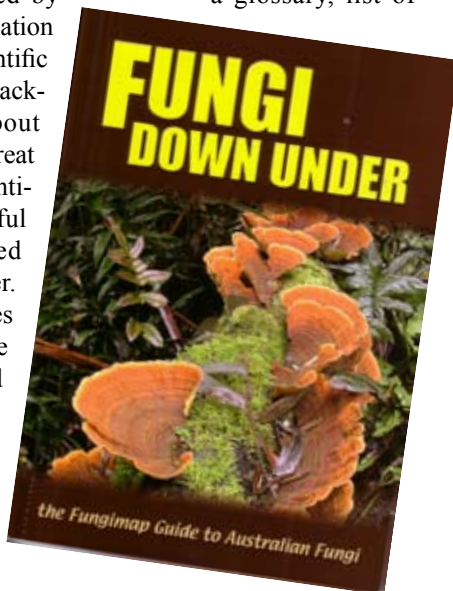
by Pat and Ed Grey (2005, reprinted 2009)

Review by Pam Watson

This book focuses on 100 of the macrofungi species targeted by the Fungimap project, which was initiated by the Royal Botanic Gardens, Melbourne, and the Field Naturalists Club of Victoria. These species were chosen because they are easy to identify in the field, and fungi-spotters from around Australia are encouraged to submit records of sightings (more details at <http://www.rbv.gov.au/fungimap/>).

The introductory section provides general information about fungi classification, observation and identification. The one hundred species are described, one page per species, with clear colour illustrations and many photographs, and distribution maps. This information is supported by a glossary, list of changed names, pronunciation guide, meanings of scientific names, references and background information about Fungimap. Colour is of great importance in fungi identification and a very useful colour chart is provided on the inside back cover. This little book provides a useful and informative introduction to the world of Australia's macro-fungi.

Soft cover, 146 pages, colour photos throughout, \$29.95.

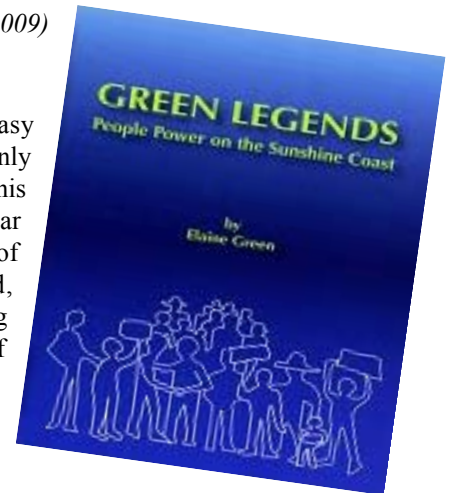


GREEN LEGENDS

by Elaine Green (2009)

Review by Lin Fairlie

Green Legends is an easy to read book and certainly will help newcomers to this area to feel more familiar with this beautiful part of south-east Queensland, as well as reawakening memories in the minds of those more familiar with the local scene and the environmental battles that have kept it so.



Elaine Green has excellent credentials to write this book, having served a term as a Maroochy Councillor and on the executive of SCEC. She was a member of the Conondale Range Committee which succeeded in having the area of the Conondales declared a National Park, so protecting it from logging. But even that declaration did not seem to save the Platypus Frog, which has not been seen since the 1980s.

There is a brief history of SCEC, the Sunshine Coast Environment Council, which kept and still keeps an eye on the major changes proposed by the three former local councils, Noosa, Maroochy and Caloundra, and the new combined Sunshine Coast Council. SCEC still has work to do and is functioning well out of its office in Nambour.

Key environmental leaders with SCEC, such as Jillian Rossiter, Des Ritchie and Karen Robinson, were instrumental in the establishment of the Greenhouse at the Woodford Folk Festival, where many well-known environmental practitioners are invited to speak or debate key environmental issues. World Environment Day, held annually on the first Saturday in June in the Sunshine Coast University grounds, is also organised by the SCEC committee.

An alternative title for this book could have been *The History of the Environment of the Sunshine Coast and Its Defenders*. The clear photos of people involved in these recent battles are interestingly set against backgrounds of vegetation or local views. There are also a few photos of the environment as it appeared before canal developments and so on.

There are many familiar faces among the numerous photos as well as beautiful wildflower photos, reminding us of Kathleen McArthur with whose wildflower paintings many of us are familiar.

There are little gems, such as: 'In 1993, a Criminal Justice Commission study found cannabis to be Queensland's second most valuable cash crop after sugar.' The future of the cane lands is still an open book as it is good agricultural land. Can we afford to just let it lie fallow?

To quote Elaine: 'Enjoy the conservation legacies created for our grandchildren and tell them of some of our own "Green Legends"'. The challenge for the next generation is somewhat more global.'

We can all benefit for understanding who and what has gone before in the region where we live.

Soft cover, 105 pages, B&W and colour photos, \$20.

The Barung Bookshop

Riverside Centre, Maleny

More than 40 book titles,
posters, CDs, cassettes & gift ideas

www.barunglandcare.org.au/publications1.html

**Donations to the
Barung Environmental
Gift Fund
are TAX DEDUCTIBLE!**

NEW 5 YEAR STRATEGIC PLAN (DRAFT) for 2011-2016

by Glen Donoghoe

Barung is a dynamic organisation that has continued to provide services and programs that support the fundamental purpose of our organisation – sustainable landuse practices in the Sunshine Coast region.

Following on from the challenges and opportunities that have faced Barung in the last few years, the organisation has been looking at its future in terms of our core activities, resources, and direction.

Where are we headed, what actions do we need to undertake, and what resources are required to achieve the desired results?

Last year, Barung staff, committee and some members attended a strategic planning workshop. The group was guided through a series of exercises that resulted in documenting the collective and common aspirations of our organisation.

These have now been used to formulate a draft strategic plan with identified outcomes to guide us over the next five years of our development.

This new plan is expected to be completed in the next quarter.

The diagram here provides a summary of the draft plan.

RESOURCES	KEY ACTIONS	STRATEGIC OUTCOMES
Volunteers, Events, Education Information Provision	Undertake community engagement programs and continue to auspice community events	Increase membership by 10% p.a.
Marketing Materials Staff & Committee	Conduct marketing campaigns; improve systems, customer relationship management and products	Increase profitability by 10% p.a.
Community Education Team	Provide information resources, vocational education and training programs, and events	Recognised regional leader in sustainable land-use education
Annual Events, Barung Environmental Gift Fund Team	Enhance and develop activities that provide additional revenue sources	Independent of government funding
Vegetation Management Team	Provide superior plant stock and on-ground works, on-time, on-budget and on-brief	Preferred regional provider of vegetation services
Staff and Volunteers	Provide professional development training; attend industry events; representation on peak groups	Professional and productive staff (including volunteers)
Management Team	Develop policies, work flow processes, associated procedures, work methods, compliance systems & other services	QA system finalised together with continuous improvement

SUPPORT Barung Landcare through YOUR BUSINESS

Business Sponsors (\$275/year) are entitled to

- a business card size advert in Barung's bimonthly newsletter (1000 distribution) x 6 issues
- acknowledgement of your support at Barung displays
- three (3) free trees, and
- membership discounts on plant purchases in the Nursery.

Business Contributors (\$55/year) are entitled to

- listing in the Barung News as a business contributor
- acknowledgement of your support at Barung displays
- three (3) free trees, and
- membership discounts on plant purchases in the Nursery.

Forms are available from the Barung Landcare Office.

BARUNG STAFF TRAINING

Six Barung staff members are studying for a Certificate IV in Training and Education.

This training is being delivered over the next five months by Target Training and is supported by the Queensland Government Department of Education & Training.

EQUIPMENT REQUESTS

Barung's operations will benefit from having these items of equipment:

- 4x4 dual-cab ute
- Ride-on mower
- Slasher attachment for a tractor

Can you help us out, please?

EVENTS

CREEC Sustainable Living Expo

Saturday 4 June, 9 am - 2 pm

150 Rowley Road, Burpengary

More info: 3888 8751 or 0407 627 716

www.creec.org.au

Sunshine Coast World Environment Festival

Sunday 5 June

Sunshine Coast Uni

The 31st Sunshine Coast World Environment Day Festival will be celebrated under the banner 'A Festival of Ideas' with a strong sustainability focus and featuring more exhibitors than ever before.

www.scec.org.au/wed.html



Gardening on the Edge

11 and 12 June

Market Garden at the Maleny High School Activities Centre and a range of local open gardens

www.malenygardenclub.org

Visioning Barung on the Precinct

Wednesday 20 June

4 pm: Walk over Barung's assigned position at the Precinct. 5 pm: Workshop to discuss ideas and directions.

Register with Barung on 5494 3151 or via the website

www.barunglandcare.org.au



War on Weeds

Aquatic Weed Forum

Friday 24 June, Noosaville

Organised by Lake Macdonald Catchment Care Group. National water weed experts presenting on best management practices, biological control, pest plant and native plant ID, and management directions.

More info on 5482 4766 or

lakemacgroup@ozwide.net.au

Noosa Festival of Water

Sunday 26 June, 10 am - 3 pm

Noosa Botanic Gardens and Lake Macdonald Amphitheatre

The Festival will again celebrate the Noosa Biosphere and Green June on the Sunshine Coast, incorporating all of the activities from previous years and more!

More info c/o MRCCC on 5482 4766 or mrccc@ozwide.net.au



Queensland Garden Expo

8 - 10 July 2011

Nambour Showgrounds

www.qldgardenexpo.com.au



World Environmental Education Congress

19 - 23 July 2011, Brisbane

www.weec2011.org

National Tree Day

Sunday 31 July, Everywhere!

www.treeday.planetark.org

NOOSA BIOSPHERE Conference

POSTPONED to July 2012

www.noosabiosphere.org.au



2011 Queensland Landcare Conference

"Generations of Guardians"

20-23 September, Ayr

Early birds registrations close: 30 June

Topics including innovations in engaging landcare volunteers; carbon opportunities for agriculture; linking youth with landcare; Queensland's first biodiversity strategy; web-based delivery for sustainable agriculture; natural disaster responses landcare-style; generations of guardians in the rangelands; Indigenous land management and Native Americans; and managing wetlands. Hosted by Lower Burdekin Landcare Association.

www.landcare.org.au/CONFERENCE.htm

PLANT CREDIT PROGRAM

With \$250 Barung members can set up a Plant Credit at the Barung Nursery that gives you a discount of 25% on tubestock, megatubes and some more advanced stock to take as you need it, subject to availability.

More info from Wayne or Dawn at the Nursery.

RESOURCES

Ecovillage Musings

A newsletter of topical and practical articles on the many facets of sustainability. Published every 2 months by Max Lindegger & team. Free, and donations gratefully accepted.

www.ecovillageresearchgroup.com.au

Barung gratefully acknowledges funding & support from:



Hinterland
Business
Centre



CARING
FOR
OUR
COUNTRY



Lake Baroon
Catchment Care
Group



Australian Government
Department of Education, Employment
and Workplace Relations



And also the Business Sponsors and Contributors whose advertisements appear in the Barung News.

THE BARUNG FAMILY

BARUNG 2010/11 VOLUNTARY MANAGEMENT COMMITTEE

President	<i>Eric Anderson</i>
Secretary	<i>Pat Fuller</i>
Treasurer	<i>David Binstead</i>
Committee Members	<i>Glenn Donoghoe</i>
	<i>Lin Fairlie</i>
	<i>Kate Fraser</i>
	<i>Diana O'Connor</i>

**And our many Volunteers, Labour
Team Participants, and Members**

BARUNG STAFF

Barung Resource Centre & Projects

<i>Darryl Ebenezer</i>	Manager
<i>Jonathan Waites</i>	Projects Officer/Trainee Coordinator
<i>Steve McLeish</i>	Barung Events
<i>Den Lalor</i>	P/T Admin/Project Support Officer
<i>Amelia Ross</i>	P/T Admin/Project Support Officer
<i>Bev Hand</i>	P/T Indigenous Educator/Project Support Officer
<i>Eve Witney</i>	Editor, <i>Barung News</i> and <i>The CODLine</i>

Barung Nurseries

<i>Wayne Webb</i>	Nursery Manager (Porters Lane, Maleny)
<i>Dawn Worthington</i>	Assistant Nursery Manager (Porters Lane)
<i>Kate Brooks</i>	P/T Nursery Manager (George St Community Nursery, Caloundra)

Barung Contracting Services

<i>Matthew Bateman</i>	Team Leader
------------------------	-------------



MONTVILLE REAL ESTATE

Montville, Mapleton, Maleny & Beyond

Ph: 5478 5478

- Rural & Residential Sales
- Property Management
- Business & Commercial Sales and Leasing

200 Main St, Montville
info@montvillerealestate.com.au
www.montvillerealestate.com.au



HINTERLAND AUTO ELECTRICS

UNIT 2, 14 LAWYER STREET, MALENY, 4552

Phone: (07) 5494 3228 **Mobile:** 0438 943 228



Montville Mist

Still Spring Water

Joseph McGladrigan

Ph: 07 5442 9411 Mobile: 0408 522 585

Email: montvillemist@hotmail.com

Bottled at the Source

David Woolston
A.M.I.A.M.E.



'A' Grade
MECHANIC

RANGE AUTO & FUEL INJECTION CENTRE

ACN: 088 360 310 Pty Ltd

ALL MECHANICAL REPAIRS and SERVICING
ELECTRONIC FUEL INJECTION SPECIALISTS
BRAKE & CLUTCH SERVICING

12 LAWYER STREET
MALENY Q 4552 **Tel. (07) 5494 3077**



Montville Coffee

100% Fairtrade Organic
What's the story in your cup?

Karen & Richard Barnett

07 5478 5585
montvillecoffee.com.au
info@montvillecoffee.com.au

Available in local stores and online




Cert. No. 4200P FLO ID 3340

**Maleny
SUPA IGA**

Rob and Samantha Outridge

* FRUIT & VEGETABLES * DELICATESSEN * MEAT *

26 Maple Street, Maleny

Phone: (07) 5494 2257 Fax: (07) 5494 2767



Ray & Pam Seddon

0488 684 688
07 5494 0383

e: thetreecanopyco@westnet.com.au
w: www.globallandrepair.com.au

the
tree canopy co.
Qld Distributors for
Trees for Earth

PO Box 317
Beerwah, Qld. 4519

BUSINESS CONTRIBUTORS

Northey Street City Farm
eContent Management &
Life Artistry
Narrows Escape Rainforest Retreat
Amy Rebecca Pty Ltd
Lions Club of Maleny
Lapmist Pty Ltd
Earthcarer

BARUNG MEMBERSHIP RATES

Individual/family membership \$ 25 pa

This entitles you to the bimonthly *Barung News* and two free trees from the Nursery, and enables you to support Barung Landcare's work in preserving and enhancing the natural environment of the Blackall Range and its environs.

Business membership \$ 55 pa
Business sponsorship \$275 pa

When your business supports Barung Landcare, you will be acknowledged in the bimonthly *Barung News* and at Barung displays, and you are entitled to three free trees and discounts on plant purchases at the Nursery.

DONATIONS of \$2 or more are TAX-DEDUCTIBLE.