

BARUNG LANDCARE ASSOCIATION INC.

Annual Report 2015—2016



Barung Landcare Association Inc.
ABN 48 562 796 065
PO Box 1074
Maleny QLD 4552

Ph 07 5494 3151
info@barunglandcare.org.au
www.barunglandcare.org.au



Barung
Landcare

Contents

President's Report	3
Treasurer's Report	6
Projects Officer's Report	7
Barung Natural Area Services	10
Nursery Report	13
Hinterland Bush Links	15
Mt Mellum Land for Wildlife Network	15
Office/Administration Report	16
Walks on the Wildside	18
Staff Qualifications	19
2016 Maleny Wood Expo	20
Barung Sponsors & Supporters	23

2015/2016 Management Committee

President	Lindsay Kruger
Secretary	Raine See
Treasurer	Alan Harrington
Committee members	Lin Fairlie
	Sue Brieschke
	Elaine Ricketts
	Ian McMaster
	Martina Gordon
	Fiona Emberton

Barung Life Members

Barry Beale	Denise Irons (dec'd)
Patricia Jacobs	John Muir
Marc Russell	Ashley Sewell
John & Joan Dillon	Jan Tilden
Lin Fairlie	Mal (dec'd) & Margaret Thomson



WORKING FOR OUR FUTURE

BARUNG STAFF 2015-2016

Barung Resource Centre & Projects

Jonathan Waites - Projects Officer
Theresa Bint - Office Coordinator
Den Lalor - Admin/Project Support Officer
Steve McLeish - Events
Susan Brieschke -HBL Projects Officer

Barung Nurseries

Wayne Webb - Production Nursery Manager
Cali Salzmänn - Retail Nursery Manager
Greg Smyrell
Fuschia Collard (now Coolum Community Native Nursery Manager)

Barung Natural Area Services

Luke McWilliam - Manager
Kate Seehuusen -Liaison Officer
Lisa Chin - Support Officer
David Luhrman -Team Leader
Simon Peters –Team Leader
Richard Kinkad - Team Leader
Donna Morgan - Team Leader
Matt Bateman (now Project Officer - Lake Baroon Catchment Care Group)

Alana Trott
Ann Bennett
Annaliese Walker
Anthony Boston
Ben Symons
Brenton Schwab
Brett Nelson
Bryn Gillard
Catherine Gregory
Daniel Harris
Darren Maxwell
Dawn Mickelo
Edward Surman
Elly Anderson
Josh Rennie-Hynes
Mark Berndsen
Nathan Thomas
Neal Rolley
Oskar Cafarella
Rosemary McVeigh
Stephen Bond
Tanya Ellison
Victor Claude Pariamo
Wendy Conway

President's Report

Lindsay Kruger

I acknowledge the traditional custodians of this land.

It is my pleasure to present the President's annual report, my second as President. Barung Landcare is in its 27th year, and was started by enthusiastic volunteers in 1989, the same year as the national landcare movement was set up by the Federal government and the Australian Conservation Foundation and supported by the National Farmers' Federation.

Over the years, Barung Landcare has been influential. Our early advocacy was for incentives for environmental programs such as land for wildlife and property covenants to encourage landowners/custodians to preserve and revegetate land. Other programs included advocacy for riparian vegetation and wildlife corridors, measures to control dairy effluent run-off, farm forestry and catchment care (which became Healthy Waterways), to name a few. We were ahead of the times but we were successful in influencing government, and these ideas are now common practice and supported by all levels of government.

Barung Landcare is well respected as part of the fabric of our regional community.

Barung Landcare is a dynamic organisation. It's 700+ members are from all walks of life, and what we have in common is a sense of community and a common purpose on environmental issues.

Financially Barung Landcare is healthy! We pay our bills on time. Plans are in place to improve our balance sheet and to have more funds available to meet our aims and objectives.

A Financial Multiplier Effect We are grateful to Sunshine Coast Regional Council for financial support of \$47,000. These funds are from the Environmental Levy Partnership Program and are used to support advocacy, rent, administrative work, wages etc. As a result of this funding Barung is able to deliver services valued over \$100,000. This is value for money.

Entities owned or Auspiced There are 9 groups we own or auspice, they are: Natural Area Services, retail nursery, production nursery, Gardens for Wildlife, Maleny Wood Expo, Walks on the Wildside, Newsletter, Mooloolah Valley Planters and Weeders, Mt Mellum Land for Wildlife Local Area Network.

Global Warming and Barung's Nurseries Barung Landcare's nurseries have been important over the years, supplying a wide range of native plant species. With the onset of global warming and a changing climate affecting our regional flora and fauna, our organisation, especially our nurseries, will be critically important in the coming years in supporting our regional ecosystems and to our regional response in ameliorating and mitigating the detrimental effects of a changing climate.

The importance of Barung's nursery resources to maintain plant diversity cannot be stressed enough. Our nursery manager, Wayne Webb is renowned for growing the most healthy range of plants in Queensland.

The Maleny Community Precinct Plan has land earmarked for Barung Landcare. A subcommittee is looking into the site's viability to suit the organisation's needs. The issue of Precinct land for Barung Landcare has been a long-drawn-out saga.

The Barung Landholders Guide, 3rd edition, is being produced again and will be out soon. The guide is true to our mission of education and advocacy; The 1st edition appeared in 1997, and the 2nd edition in 2005. It is being edited by Elaine Green-Ricketts, assisted by Lorraine See.

This is truly a resource appreciated by the entire regional community.



Presidents Report (cont)

The Future: 2016-2020 - Early in 2016 we commenced a series of business planning workshops to plan our future from 2016 to 2020. I thank Ian McMaster for leading that process. Participants were managers, staff and committee members. Ian has produced a draft document which is being reviewed.

This should be seen in the wider context of planning for Barung's future, and includes volunteering and our business arms, the nurseries and contracting.

Our new business plan will reflect our community and volunteering relationship links. Barung's strength and resilience have come about because we have been welcoming of people and ideas. It's important that we avoid any moves toward corporatization and stay true to our stated mission and values.

Volunteers have been central to our success from the first day. Enthusiastic volunteers started Barung Landcare in 1989. Only after we were well established and organised did we employ staff. From day one, volunteers have been a mainstay of the organisation, whether in the nurseries, office, Wood Expo or Management Committee, and their dedication and sense of purpose keeps us relevant.

The Management Committee has had an active year. Whenever change takes place, management needs to have the knowledge and drive to see it through successfully. I'm pleased to have been part of this group that has worked well together. Again, a shared common purpose has been the factor in driving change while maintaining the ethos and camaraderie of volunteering and managing a not-for-profit million-dollar organisation.

Bursaries Barung Landcare is to offer two bursaries:

To the University of the Sunshine Coast, the sum of \$3,000 over three years from 2017 through 2019 inclusive, for the purposes of funding one (1) bursary each year, valued at \$1,000.

To Maleny State High School: up to \$1,500 over 3 years. One bursary per year valued up to \$500. This is still in discussion.

In long-lived groups like Barung Landcare, there are many "baton changes" and those of us active today benefit enormously from the good work done by those who've gone before.

Many thanks to the volunteer management committee, Sue Brieschke, Ian McMaster, Lorraine See (secretary), Alan Harrington (Treasurer), Lin Fairlie, Martina Gordon and Fi Emberton. Fi, Martina and Lin have stepped down from the committee. Collectively, they have done a great job! Their dedication to the cause and their work ethic have been phenomenal.

I'd like to give a special mention for Lin Fairlie, who has been a member since 1995 and joined the committee in 1997. Lin, a big, big thank-you from the Barung family for your dedication to the organisation and the environment, and for volunteering at many events including the Wood Expo. Your corporate knowledge of the organisation is unsurpassed.



Outgoing Committee Members Martina Gordon and Fi Emberton going above and beyond at the 2016 Maleny Wood Expo

Employment generation has been a strategy of the organisation for many years. We set out to create meaningful, constructive community jobs. We employed in the 2016 financial year **4 full-time, 7 part-time and 31 casual staff**. Staff voluntarily contribute extra hours to our not-for-profit organisation.

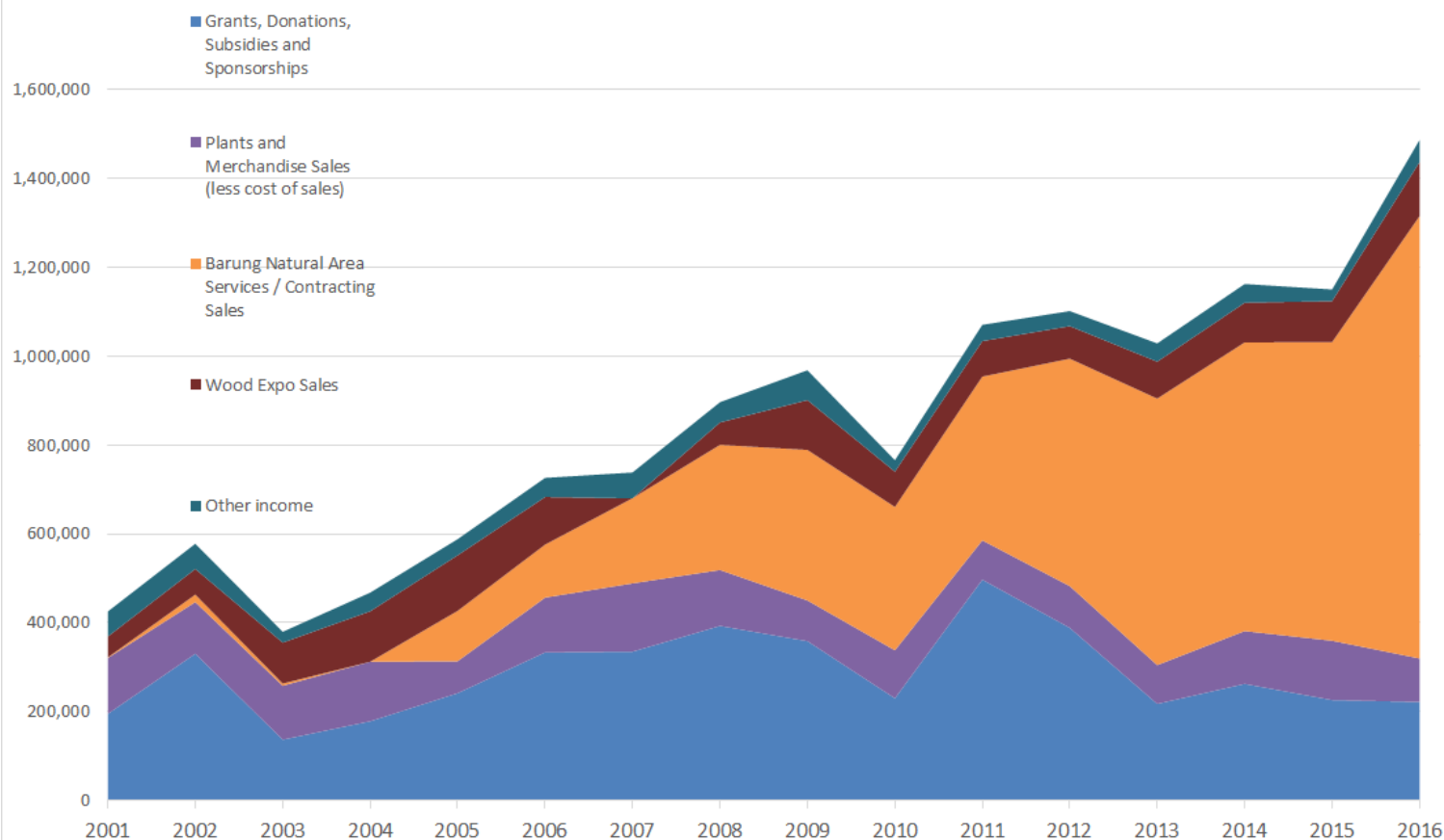
To maintain communication and networks in our region, I have liaised with diverse groups and attended many meetings and events. Some of these included: Wood Expo planning, Hinterland Business Centre, Neighbourhood Centre, Mary River Catchment Care Committee, Sunshine Coast Environment Council, South East Queensland Catchments, Gardens for Wildlife, Maleny Green Hills, Environmental Defenders Office workshops, Lions Club Welcoming Dinner, Walks on the Wildside, Barung's workshops, Burnett Mary Regional Group and the CSIRO.

I thank all volunteers, staff, members and friends, past and present, for their passion and commitment to the cause of making a better regional community through environmental awareness and action.

Barung Landcare very much appreciates the assistance given by our sponsors and especially the Sunshine Coast Council, for their material and financial support.

Lindsay Kruger
President
Barung Landcare

Barung Income Sources Financial Years 2001 - 2016



Treasurer's Report

Alan Harrington

As your Treasurer, I present both this report, the Financial Statements and the Auditor's Report for the year ended 30 June 2016. The report includes:

Income & expenditure for the last financial year;

Balance Sheet of Assets & Liabilities as at 30 June, 2016; and

Depreciation Schedule for the last financial year.



The review of Barung's operations and practices continued throughout the year. This has resulted in the growth of our natural area service activities, increased production at the nurseries and enhanced administration and provision of services from the office. The review extended to the Wood Expo, resulting in an extremely successful event. However, it is mentioned that Barung is in a very competitive environment where profit margins are tight and surpluses can turn around very quickly, particularly when impacted by issues beyond our control!

With thanks for the contribution of staff, both volunteer and paid, Barung Landcare finished the financial year with a surplus of \$129,508.85.

This surplus has enabled us to improve our Workplace, Health & Safety practices, to purchase new and replace out of date machinery and to put on staff, as required. We have also been able to update our phone and IT systems.

The surplus puts Barung in a good position to meet significant expenditure outlays that have to be addressed in the coming year including the replacement of old equipment and the expenditure associated with the development of Barung on the Maleny Precinct.

I would like to thank my fellow Committee members and staff including BNAS Coordinator Luke McWilliam, Nursery Managers Wayne Webb & Cali Salzmann, Project Officer Jono Waites and Event Coordinator Steve McLeish. In particular I thank Admin Officer Den Lalor and Office Manager Theresa Bint whose contributions have been superb.

I move that the independent Financial Audit and the Treasurer's Reports be accepted as presented. I also move that Michael Harper be accepted as the external Auditor for the 2016-2017 financial year.



*Barung Business Planning
Workshops March 2016*

Project Coordination

Jonathan Waites

Projects Officer

Barung projects this year were made up of workshops covering a range of topics supporting our advocacy role. We holds workshops, talks and events that are interesting and informative (we hope) with the intention of enabling people to make informed choices about managing their land and their lives.



Sense of Place Workshop

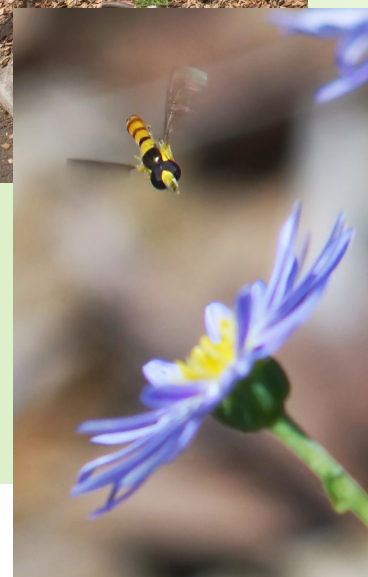
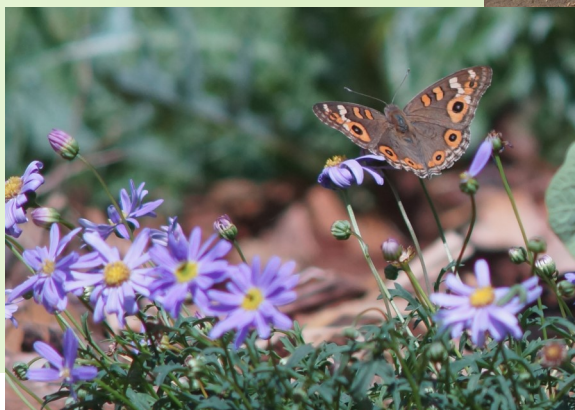
Barung's **Gardens for Wildlife (GfW)** project keeps humming along; we now have over 200 members. We ran seven workshops last year including three as part of the 'Making Your Front Garden For Wildlife' series which attracted around 150 participants. The 'Create a Garden Paradise for Wildlife' workshop (a joint event with Hinterland Bush Links) was so popular we had to run it three times to meet the demand.

GfW is a 'condensed' version of Land for Wildlife. It aims to support urban and peri-urban landholders who may not qualify for Land for Wildlife but never the less aspire to provide habitat for wildlife in their backyards and contribute to habitat connection across the landscape.

Particular thanks are due our workshop presenters and hosts. This year these included,

- Author and permaculturist, Jenny Allen who along with Susie Duncan (Hinterland Bush Links) hosted and presented the three very popular 'Create a Garden Paradise for Wildlife' workshops
- Jillian Rossiter who hosted the 'Bring Beautiful Butterflies Back to Our Backyards' presented by Helen Schwencke
- Fungi guru and author Fran Guard who presented 'Fungi, Fun & Facts'
- Joan Dillon who presented and hosted 'A Garden Journey' and who has been the driver of the 'Making Your Front Garden For Wildlife' series. Joan has supported the project since its inception and has been involved in some capacity in nearly all of our events
- Leanne Harper of Home Soil Solutions who presented at our second 'Making Your Front Garden For Wildlife' workshop
- Edith-Ann Murray of Hinterland Business Centre who organised the clearing of the garden bed in front of the Barung office which has seen our first planting effort in the above series

The success of this project is due in no small part to the support of GfW members along with a number of Barung members who have engaged with our workshops and generously volunteered time and expertise; we thank you all.



*Pictures: Hinterland Business Centre Garden for Wildlife
Planting July and some visitors in Nov 2016*

Projects Officers Report (cont)

Barung has completed the second year of its three year **Environment Levy Partnership Funding Program (ELP)** agreement with Sunshine Coast Council. The funding is available for community groups to help offset their operational expenses and provides a way for council to 'work in partnership with the community to achieve council's priorities'



ELP grant funding has been of benefit in helping to offset some of the costs associated with our advocacy work. It has supported the salaries for extension, management and administration officers as well as office rental costs. Directly and indirectly it assists us to provide information (e.g., plant selection guides), events (e.g., Maleny Wood Expo), talks (e.g., *25 years of NRM & Sustainable Ag in Cambodia*), community support (e.g., the National Tree Day for Schools seedling donations to Tullawong State School and Maleny State School, visit to Montville State School on National Tree Day for Schools to identify plants for students) and the dissemination of written information (e.g., the quarterly Barung Newsletter). Funding which supports these types of activities is rare and extremely important in providing Barung with the capacity to further its objectives.



The **Revegetating the Range (RtR)** project funded through BMRG with Healthy Habitats funding has kicked off. The project consists of five workshops of which we have held two; two more are planned for this year and the remaining workshop will be held in 2017.

The five half-day workshops have been designed to take participants through the complete process of planning, preparing, planting and maintaining a revegetation project on one site over a ten month period. Each workshop will cover a discussion of general theory relevant to the workshop topic (e.g., site preparation) followed by a more specific discussion, and reasoning for, the approach chosen for the particular project site. There will also be a practical component or demonstration if applicable to the topic under discussion.



The first workshop, 'Native Seed Collection & Propagation', presented by Wayne Webb was held at our Production Nursery at Landsborough. 'Native Plant ID & Weed Recognition' led by Greg Smyrell was held at "Laughing Waters", Denis Wood's property at Flaxton. The remaining workshops, 'Planning, Preparation & Commitment', 'Planting Methodology – the Theory & the Practice' and 'Maintenance & Follow Up', will also be held at "Laughing Waters" and presented by Greg.

Something that is at the heart of the work we are engaged in is encouraging people to discover their 'sense of place', their own connection to the bit of the planet where they live, work and play. Dr. Thomas Woods (president of Making Sense of Place) believes that,

"A sense of place emerges through knowledge of the history, geography and geology of an area, its flora and fauna, the legends of a place, and a growing sense of the land and its history after living there for a time."

To this end a **Sense of Place** workshop was run in the (now deceased) kiosk at Mary Cairncross Scenic Reserve. The event (funded by BMRG and the Regional Landcare Facilitator) was fully booked and began by setting the social context of our area with speakers covering local Indigenous history (Bev Hand) and European history (Harvey Bryce). This was followed by ecologist Greg Smyrell who introduced participants to a systems view of the landscape by illustrating the connections between past land forming processes and resulting soil types on the range which support various vegetation structures, plant species and hence lots of furry 'critturs'. Representatives from local environmental groups, Hinterland Bush Links (Liz Saunders) and Lake Baroon Catchment Care Group (Mark Amos), as well as Sunshine Coast Council (Alan Wynn) discussed their work and particular interests, and invited people to join them and become involved in their various activities. The program for the day ended with a walk through the rainforest reserve guided by volunteers from the Friends of Mary Cairncross Association.



We are currently negotiating funding for two **on-ground projects** which will see Barung once again offering support (albeit limited) to a small number of landholders to carry out valuable environmental work on their properties. More about this next year.

Jonathan Waites - Projects Officer

Natural Area Services

Luke McWilliam

Our multi-skilled professional staff base has continued to maintain Barung's reputation for producing excellent environmental outcomes. This combined with the committee's guidance and invaluable financial and management support has meant that Barung Natural Area Services made solid financial and project performance gains. We are proud to say that all of our contracts were completed ahead of time and within budget.

It's been a pleasure to work with the Sunshine Coast Regional Council as we enter the second year on their panel as preferred contractor for the Hinterland Central zone.

Major projects for the year included:

- ⇒ Scouts Crossing Road revegetation for Moreton Bay Regional Council (12 250 plants)
- ⇒ Halls Reserve revegetation for Moreton Bay Regional Council (7 500 plants)
- ⇒ Forestry Road revegetation, natural regeneration and control of exotic pines for Sunshine Coast Regional Council (1400 plants)
- ⇒ Revegetation at Woombye for Queensland rail (2 500 plants)
- ⇒ Other notable work our staff took pride in included:
- ⇒ Cats Claw Vine control along creeks in the Baroon Pocket Catchment for Seqwater through the Lake Baroon Catchment Care Group.
- ⇒ Weed control works and natural regeneration on private properties for Mim Coulstock, Jeff Cornfoot and Sue Brieschke.



The team is getting geared up for a busy summer season including the upcoming project (Mary River Rehabilitation project for Sunshine Coast Regional Council) that will see 40,000 plants planted near Kenilworth by May next year.

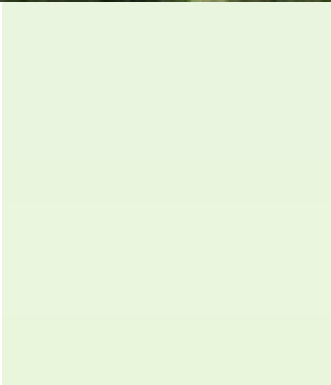
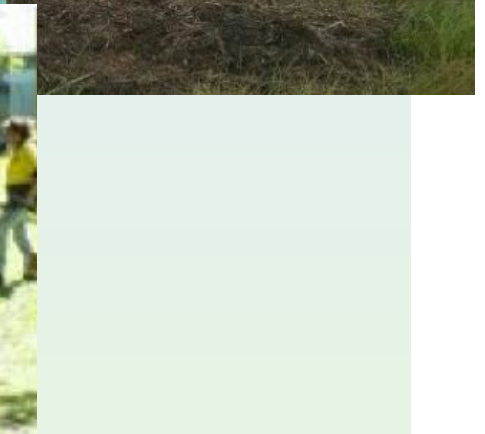
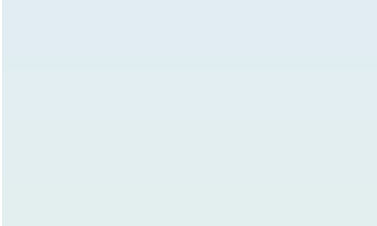
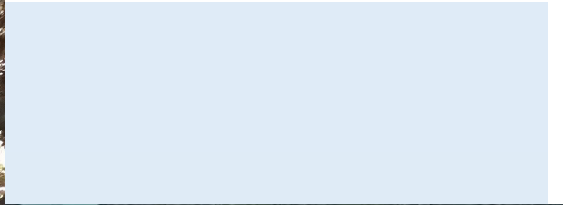
The tablets that were introduced last year continue to be an integral part of daily operations and have also been useful for weed mapping and bushland surveying projects completed for Sunshine Coast Regional Council.

Barung Natural Area Services has started the certification process for our quality, environmental and occupational, health and safety management systems as per Australian/ International Standards. Our clients are increasingly requesting this certification and the process of certification will improve our opportunities for obtaining work in future.

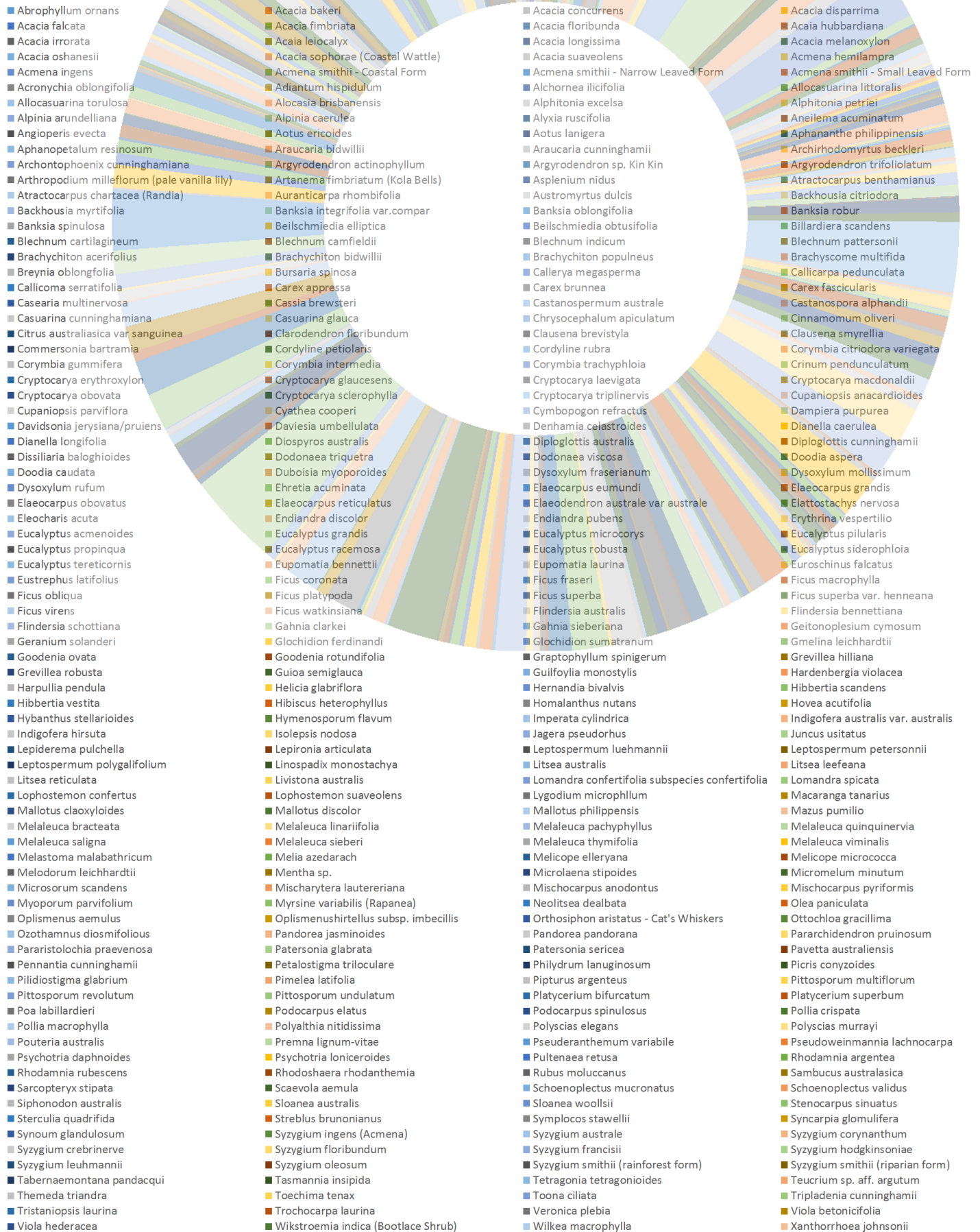
We bid a fond farewell to Brenton Schwab upon his move to Sydney to pursue his career as an artist full-time. As a result Simon Peters has gladly stepped up to take over as supervisor of the Sunshine Coast team including the role of Community Nature Conservation Coordinator to manage the bushcare group at Tanawha Tall Gums. We are grateful to Richard Kinhead who has in turn taken the role of 2IC on the Sunshine Coast team.

The whole team is looking forward to having a home base at the Maleny Community Precinct.

Barung Natural Area Services would like to thank local landholders, who continue their important conservation work in the Blackall Range, for entrusting our team with their projects and we give thanks to the Barung committee as stewards of Barung.



Diversity of Species supplied by Barung Nursery 2015—2016



Nursery

Cali Salzmänn

Retail Nursery Manager

This year, Barung Nursery has achieved:

Increased diversity of plants for retail and wholesale

We've significantly increased the diversity of plants available for sale and this has been noticed and appreciated by our customers. Grasses, ground covers and plants for home gardens contribute to the diversity, but new species as well as species we haven't offered in the past few years have also brought smiles to customers, both retail and wholesale. Barung Landcare Nursery grows many species, **as you can see in the accompanying graph**. This is the main difference between ordinary nurseries and Barung: We don't grow a lot of just a few species - we grow as many species as possible, even if only a handful of seed is available. Seed availability depends on the season, the ability to get out to collect, assistance from members who bring in seed for us, as well as what seed is commercially available if we must buy it in. Such diversity influences our ability to keep availability lists up to date. Plants come and go very quickly - a growing list done in the morning can be out of date by the afternoon, especially when we are growing for projects and have lots of Land for Wildlife or Landholder Environment Grants come in. These often coincide with having a diverse range of plants ready for the Wood Expo and the Nambour Garden Show.

Supplied plants for Stage 2 of the Unity Water Recycled water treatment planting

We successfully completed Stage 2 of the Unity Water planting by growing and supplying over 30,000 plants to Verterra to plant. Verterra was very happy with our services and the quality of our plants and has continued to choose us to supply plants for other projects as well. Speaking of projects, Barung supplied over 30,000 plants to the Maleny Community Precinct (MCP) this past year, over 20,000 the year before, and several more thousand through groups like Maleny and District Greenhills Fund. Since the first plantings years ago, Barung has provided over 100,000 plants to the MCP. Think about that when you go for a walk through the Precinct!

Implemented infrastructure improvements to the production and retail nurseries

The new nursery benches in Landsborough are making life easier and we are not far off from having the last remaining benches completed. The benches provide better growing conditions for the plants, keeping them off the ground and allowing better air flow and root pruning. The staff and volunteers are also glad to be working at a more appropriate height. These benches will make preparation for the large Mary River Rehabilitation project requiring over 40,000 plants beginning in March/April 2017, additional contracting needs, retail and council orders much more manageable. Having them made in-house has saved a considerable amount of money. We've also had two new nursery trolleys welded by Peter Fuchs, who made our benches.

Reorganised the retail nursery

The driveway at Porters lane has been revamped. It is easier to trolley plants up and down, provides better footing and allows vehicles picking up or dropping off very large orders to pull into the flat area near the office and leave easily without throwing gravel or getting stuck. Greg, myself and all the volunteers spent four days rearranging the Porters Lane nursery. No longer are orders held in the retail nursery so all plants displayed are for sale. This made room for the increased range of plants and stopped customers from being put-off by not being able to purchase plants they could see.



Thankyou to our wonderful volunteers!

Barung volunteers are the core of our organisation – here are some of the people who do invaluable work in our nurseries:

Ester Bradshaw

Ruth Blanch

Alan Felmingham

Peter Atherton

Trevor Sauer

Kim

Sue Brieschke

Elaine

Daryl Reinke and Craig Hosmer

Lyn Finlay

Gretchen Evans

Lindsay Baillie

Martina Gogarty

Peter Milton

Paul Barnes

Reece Tidler

Di and Ian Webster

Kellie Huddy

Nursery Report (cont)

Generated good sales at both the Wood Expo and the Nambour Garden Show

The Wood Expo and Nambour Garden Show were successful, especially considering how much stock was required for the Unity Water project, Land for Wildlife, Land Environment Grant customers, contracting and Council Reserve plantings.



Installed security cameras to reduce loss of plants and materials

Security cameras have now been installed at Porters Lane and Landsborough to deter unauthorised removal of plants and materials.

Raised our customer service level: The Extra Mile

Porters Lane Retail Nursery prides itself on providing excellent service - thanks to staff and knowledgeable volunteers like Daryl Reinke and Craig Hosmer. Greg Smyrell adds further expertise with superb knowledge of soils, geologies, plant species of the area and plant identification. We try to go the extra mile for our customers: an elderly woman named Evelyne rang Barung from Brisbane wanting a selection of plants for her new raised garden bed. She doesn't drive so she couldn't come herself. I drove the plants to her on the south side of Brisbane; she was so happy and so grateful! She sends photos of her lovely garden bed and tells everyone she knows about Barung! Liz Stafford and Jo Boynton are members who live in Witta and work in an office building in Birtinya - fully enclosed with air conditioning. They came for advice and I helped them put together a good selection of indoor plants. They, too, are happy and have sent photos. Sometimes a little extra effort is more effective than advertising or websites. Wayne has also gone the extra mile for production nursery customers, spending time to make sure they get the right plants and advice.

Reduced chemical application of pesticides by using bio agents

Wayne and I have been using ladybeetles and lacewings to combat insect pest problems. Without chemicals, beneficial bugs and insects can grow in number - I even see orange snout mites now. The beneficials may specifically tackle mealy bugs, aphids and mites or are useful general all-rounders, such as lacewings. This also benefits the birds who hang about in the shade house picking off caterpillars etc. By not using systemic poisons, we know that what the birds eat won't kill them. Yes, we purchase the beneficial bugs, but compared to spraying with chemicals they are much cheaper and non-toxic!

Switched to a point of Sale program at Porters Lane

A point of sale register has been implemented at the nursery: it is a great help and well worth the time and effort it took Den to get it going. It is much easier to provide quotes, detailed receipts when required, reconcile the day's takings, and will in the future be integrated with a barcode scanner.



Planned works:

- ⇒ Supply of water and hand washing facilities to Porters Lane
- ⇒ A more accessible, volunteer-friendly toilet at Porters lane
- ⇒ Replace rusting display benches at Porters Lane

Hinterland Bush Links

Susie Duncan



www.hinterlandbushlinks.org

Hinterland Bush Links has enjoyed a very busy year with the increasing involvement of the community in restoring and connecting our bush. We are now an incorporated organisation, enabling the group to receive direct funding from Sunshine Coast Council. However, we maintain a very close working relationship with Barung Landcare and a Memorandum of Understanding ensures that this will continue.

We are very grateful to Barung staff and committee for their support, ranging from the use of the Barung website for advertising Hinterland Bush Links (HBL) events, through to administration of our Glideways project and the Subtropical Forests Ecology Course whilst we were still in transition to incorporation. Special thanks to the Barung office staff who cheerfully assist us with an array of tasks.

In turn, HBL has presented a range of Gardens for Wildlife workshops and promoted Barung to new landholders. We also engage Barung Contracting to undertake on-ground works for our Upper Mary Valley Weed Vine project.

If any Barung members would like to sign up as a member of Hinterland Bush Links, please contact me. There is no fee to join and we can send you our recent annual report describing our activities in the past year, once you're registered. Wishing you well with your efforts to restore this beautiful hinterland environment.

Mt Mellum Land for Wildlife Network

Christine McMaster

The Mt Mellum Land for Wildlife Network came into being in 2015. Local Land for Wildlife advisors Alan Wynn and Nick Clancy supported the formation of the group and have given considerable assistance as we have progressed.

The Network is made up of landholders of Land for Wildlife-designated properties on Mt Mellum and surrounding areas. At present there are some 20 members, with the expectation that other Land for Wildlife landholders will join if interested.

Our intentions are to encourage and educate ourselves in the work we are doing on our properties as Land for Wildlife members. Our activities are mainly educational, exploring and learning more about the local environment, its components and the relationship between those components, and how we landholders can best work on our properties. We do this through informal discussions, property inspections and field days, both on individual members' properties and on public land. There is also a strong social component to our events. The group meets every three months.

In September, the group signed a Memorandum of Understanding with Barung Landcare, enabling us to be covered by insurance under the umbrella of Barung's incorporated status.

We are in the process of developing a Workplace Health and Safety policy, which will be submitted to Barung in due course.

Our activities since the inception of the group have included a walk through Mt Mellum East Nature Refuge followed by morning tea and a discussion about forming the group, a visit to Richmond Birdwing Park accompanied by a Kabi Kabi elder who introduced us to the land from her perspective, a visit to a partially-revegetated property near the top of Mt Mellum, an early-morning bird walk and breakfast at another Mt Mellum property, a walk through Mary Cairncross Scenic Reserve followed by a social morning tea, and a guided walk and introduction to a member's property at Peachester. Our next event will be a Land for Wildlife day at the Council-owned London Creek Environmental Reserve in MacDonalds Rd, Peachester. At this event, members of the larger Sunshine Coast Land for Wildlife community will join us.

The Network is grateful to Barung for allowing us to affiliate under Barung's incorporation structure, to the ongoing assistance of local Land for Wildlife advisors Nick Clancy and Alan Wynn, and to the generosity of group members who open their properties to enable us to see the range of habitats, projects and environmental actions of Mt Mellum landowners.



Resource Centre and Administration

Theresa Bint - *Office Coordinator*

Den Lalor - *Admin Officer*

This year has seen an increase in the busy-ness and efficiency of the Resource Centre. It is great to be in what feels like the hub of Barung with vollies, Barung members, committee members and staff from all the branches of the Barung family dropping in and working with us.

We've reduced the amount of paperwork (and paper waste!) through the introduction of new hardware and software. Tablet computers, a barcode scanner, receipt scanner and the widespread use of a new point-of-sale system on the tablets have already made life easier and it's just going to get better! We aim to have barcodes on all items, including books, tubestock and pots which should make sales, stock control and administration a lot simpler and more efficient.

Newsletters and columns

The Barung Newsletter is now wholly produced at the Resource Centre; our aim is to publish a newsletter each season. We receive some excellent material from Barung vollies, staff and committee members – the wealth of knowledge and quality of photos is quite remarkable – thank you all! Positive feedback and compliments from Barung members indicate that the newsletter is going over well – we think it looks great! **Past editions of the Barung News (from 2004) and Annual Reports** are available from the Barung Resource Centre or download from www.barunglandcare.org.au/newsletters. A big thanks to volunteer Antonio for many hours doing layouts for newsletters and reports.

Barung also makes regular contributions to local papers. Joan Dillon pens the Barung Landcare article in The Hinterland Times; in the Glasshouse Country and Maleny News, Barung contributes an article for the Environment column every four weeks.

Hinterland Business Centre Front Garden for Wildlife

It's not just the wildlife who benefit from the recent HBC front yard 'makeover' - it's been wonderful to watch the transformation of the front yard of the Hinterland Business Centre (where we in the office have front row seats!). Strong little wildlife-friendly plants are already flowering. It's given a fresh feel to the front yard – and that's just stage one! Thanks to Joan, Jono and the enthusiastic workshop participants who made this happen.

Barung at the Kiosk

Barung is at the Community Centre kiosk in Maple Street every Thursday – selling plants, books, CDs and membership. Drop by and say hello to one of our terrific kiosk vollies: Helen, Antonio, Kellie, Raine, Lyn Hill and Paddy Parr.

Thanks again to Barung Resource Centre volunteers Kellie, Helen, Antonio and Lyn whose contributions throughout the year were invaluable.



Barung's migration to cloud based systems has moved ahead with BNAS, Nursery and Administration all contributing and collaborating from our different locations. Our point of sale tablets are now directly linked to Barung's accounts which enables more accurate and interesting data capture with less errors (see plant diversity graphic on page 12).

It's a great pleasure to see sales and quotes processed and come in from sometimes 4 locations at the same time (Maple St Kiosk, Landsborough, Porters Lane and Resource Centre) . Thanks to Kate and Lisa from BNAS for jumping onboard the accounting cloud with BNAS quotes and invoicing.

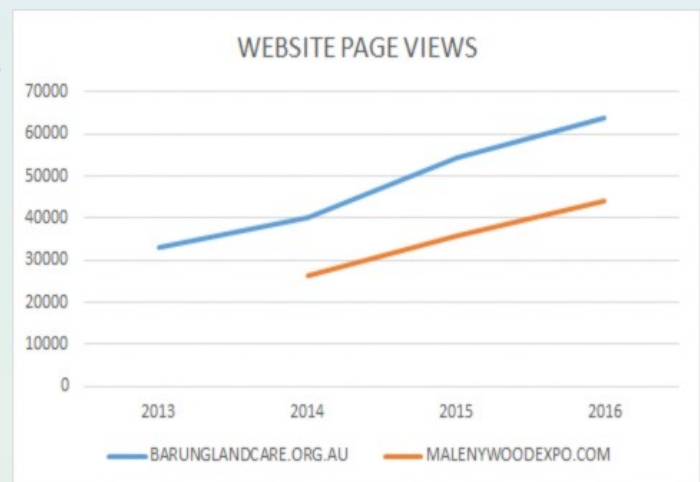
Thanks to staff and volunteers who have taken on and put to good use Barung's Membership and Event Management System. Last Financial Year Barung has sent :

110,451 Events and Workshops notification emails

2312 Membership related emails

There were over 1000 workshop and event registrations taken for the year.

Website traffic is up for both Barung Landcare's and Maleny Wood Expo's websites



Engagement

7.7K +7.6K

Reactions 5.3K

Comments 588

Shares 1.7K



Well done also to staff and volunteers taking to social media to promote events, workshops and the ideals that keep us motivated. Again there was a big jump on last year's analytic data.

Followers

375 +112



@barunglandcare +47 209



@malenywoodexpo +65 166

Tweets

603 +597



@barunglandcare +421 426



@malenywoodexpo +176 177

Walks on the Wild Side

Raine See

Co-ordinator of Walks on the Wildside

We've had a good year Walking on the Wildside. Not all walks were terribly 'wild' but they were all fun. Our wanderings have included a visit to Ian and Chrissie McMaster's magnificent property overlooking the Glasshouse Mountains to see the incredible amount of work they are undertaking there.



We had an 'interesting' walk to the Andy Goldsworthy cairn at Conondale which inspired long conversations about how easy it was to locate (don't ask!!) and whether the cairn was money well spent! What price do you put on art?? We have to report that the fig tree planted in the top is recovering and starting to shoot again. This walk involved a lot of creek crossings.

The knowledgeable Fran Guard led us on a very informative Fungi Foray around the Precinct path. A couple of our younger walkers, Steele and River, brought samples of fungi for Fran to identify and we viewed some fairy rings.

To celebrate 'Save the Koala' week the walk in Koala Park in Nambour brought the children along and we had a great time looking for koalas. A young naturalist, Rhett, identified scratch marks on the trees and koala scats and informed the other children who were very interested. Although the evidence was there we didn't actually see any koalas.

Our lovely patron, Jill Morris, opened the Book Farm again for us to explore. Jill read some of her stories to the children who came. They were also happy recipients of some of Jill's books. Morning tea in her forest is always a special event.

An expedition up Mt. Ngungun was lots of fun. It is a popular place for walkers and we had to share the mountain with half the Sunshine Coast it seemed! It is no wonder it is so popular because the views from the top are spectacular. Our butterfly expert Helen Swenchke, accompanied us on this walk and enlightened us once again with her amazing knowledge of caterpillars and butterflies and who made which hole in the leaf!!

The last walk we did was to Mapleton Falls and a walk around the Wompoo Circuit and morning tea in the forest.

For the last walk for this year I have planned a visit to the Botanical Gardens at Tanawha. Combining my two hats (Barung and Sister Cities) I would like people to see our collaborative art exhibition at the Art and Ecology centre with a photographic exhibition by a Japanese artist, Masaru Shimkawa from our sister city, Tatebayashi in Japan. His exhibition is titled 'Water and the Environment' and is a record of his daily walks to the Watarase Retarding Basin. Australian sound artist, Dr Leah Barclay's exhibition is entitled 'River Listening'. This involves workshops 'Water and the Environment' where participants walk blindfolded. For anyone interested you can book at the Sunshine Coast Council website community.sunshinecoast.qld.gov.au. This event will be held on Saturday 26th November. For those not interested in the workshop there will be the Sculpture Garden and the new children's Whipbird Walk to explore as well. Watch for emails with more information closer to the date.

Barung staff profile: skills and qualifications

Here's a summary of some of the skills and qualifications of Barung staff:

- 16 Chainsaw Level 1
- 12 Chainsaw Level 2
- 17 Senior First Aid
- 13 Construction Safety White Card
- 2 Blue Card working with Children
- 1 ChemCert Accreditation
- 16 Commercial operator's licence for using herbicides (ACDC)
- 5 Cert IV Training and Assessment
- 2 Cert IV Business
- 1 Cert IV Small Business
- 1 CERT III Solid Plastering
- 1 CERT III Wall and Floor Tiling
- 1 CERT III Tour Guiding
- 2 CERT III in Conservation and Land Management
- 4 CERT III Horticulture
- 1 Advanced Cert in Pastoral Zone Management
- 1 Diploma in Business
- 1 Diploma in Applied Science
- 1 Diploma in Project Management
- 1 Diploma in Work Place Training & Assessment
- 3 Diploma in Conservation and Land Management
- 1 Bachelor of Science (Zoology)
- 1 Bachelor of Science (Ecology and Conservation)
- 1 Bachelor of Land Management (Ecological Agriculture)
- 1 Bachelor of Coastal Studies
- 2 Bachelor Environmental Science
- 2 Bachelor of Arts
- 1 Bachelor of Applied Science (Horticultural technology)
- 1 Bachelor of Applied Science (Natural Resources Management)
- 1 Graduate Certificate in Environmental Management
- 1 Graduate Certificate in Sustainability
- 1 Master of Scientific Studies (Botany)



Congratulations Barung Office Coordinator, Theresa, who was recently awarded a Master of Scientific Studies (Botany) degree from the University of New England, Armidale.



2016 Maleny Wood Expo

Steve McLeish

This year was our 20th Maleny Wood Expo and it was a great success. Here is a selection of the feedback that has come in so far -

"What I like best about the expo is the family friendly atmosphere, more of a medieval fun fair with music, excellent food and the Green Man lurking in the woods. The best wood show by far in Australia!"

— Chris Clark, Australian Woodsmith Magazine

"We reckon The Maleny Wood Expo gets better every year and we thoroughly enjoyed this one with all the happy crowds. The rain just made our garden happy! Thanks so much to you all for your positive vibes around our huts. It makes Neil's efforts worthwhile! See you in 2017!"

— Les & Neil, Transitions Timbers

"Hi Steve, we will definitely be back again. I think it was the best yet and would only have positive feedback for sure. I had heaps and heaps of positive feedback from customers which is a real credit to you and the team."

—Paul, Fab Slabs Timber

I think that says it all...fantastic job everyone!!!!

We had over 8,000 visitors over the 3 days. On Saturday the sun sparkled and the cars rolled in. A huge thank you to Chris Brooker and the Rotary crew for parking everyone with such grace. Sunday's rain certainly dampened the visitor numbers and the grounds... but I was very surprised at how many umbrellas there were floating around the site, sheltering smiling people. Many exhibitors said it was their best day, they said the people that came really wanted to be there.



Monday was reintroduced this year to bring the event back to a 3 days...it proved to be a great decision. The sun came out again and the site had a chance to dry up; the cars rolled in and it was a wonderful day. The third day helped boost our numbers at minimal extra on-ground costs.

We are steadily gaining the reputation as one of Australia's best timber related shows - in fact some prominent industry leaders are saying say ours is now the best in Australia. Congratulations to Barung and its members for hosting such a quality event.



Work on the 2017 Maleny Wood Expo has already begun. The dates are set, 29th April – 1st May.

Next year is the Wootha Prize's 10th year... so one more reason to celebrate. The theme for the Wootha next year is 'Inside Out'.

2017 WOOTHa PRIZE "INSIDE OUT"

Enormous thanks must go out to the Maleny community for its support. Thank you to all the volunteers who take such pride in the Expo and to all the local businesses who generously donate their goods and services to the raffle and the opening night. And many thanks to all our sponsors and supporters.





The 2016 Maleny Wood Expo Post Event Report is available from the Barung Resource Centre or download from www.malenywoodexpo.com/reports

Past editions of the Barung News (from 2004) and Annual Reports are available from the Barung Resource Centre or download from www.barunglandcare.org.au/newsletters



On a sad note, Mal Thompson, one of Barung's founding members passed away on Monday 1st August. He was also a family man, farmer and a good bloke. Due in part to Mal's collaborative efforts with others in 1989, Barung has become the large and influential organisation that it is today. Mal and Margaret were made life members of the organisation many years ago.



OUR 2015—2016 SPONSORS AND SUPPORTERS

Thankyou for supporting Landcare on the Blackall Range



HINTERLAND
Business Centre



Ananda Marga River School

Crystal Waters Community Co-operative

eContent and Life Artistry

Earthcarer

Family FEASTival

Habitat Support

Karom Salt

Lapmist Pty Ltd

Maleny Green Printery

Montville Village Real Estate

Narrows Escape Rainforest Retreat

Native Plants SEQ

Northey Street City Farm

Range Auto & Fuel Injection Centre

RB Safety & Training Services

South East Land Repair

Suncoast Hardwoods

Sunshine Coast Koala Rescue



Annual Report 2015 –2016



WORKING FOR OUR FUTURE

It's all about...
...fresh AIR
...clean WATER
...healthy SOIL
...native FLORA
...vital FIRE
...diverse FORESTS
...caring PEOPLE
...abundant WILDLIFE

Barung Landcare is working to develop ethical solutions for a sustainable future. We support regional and local empowerment to conserve and enhance the rich diversity of natural resources of the Blackall Range and environs.

BARUNG LANDCARE ASSOCIATION INC.

Barung Resource Centre
38a Coral Street, Maleny
PO Box 1074 Maleny Qld 4552
Ph 07 5494 3151
info@barunglandcare.org.au
www.barunglandcare.org.au

Barung Nurseries
Retail: 26 Porters Lane, North Maleny
Ph: 5302 9900 / 0429 943 152
Production: 135 Forestry Road, Landsborough
Ph: 0429 943 153
nursery@barunglandcare.org.au

Barung Natural Area Services
Ph: 0400 666 488
contracting@barunglandcare.org.au

Supported by

